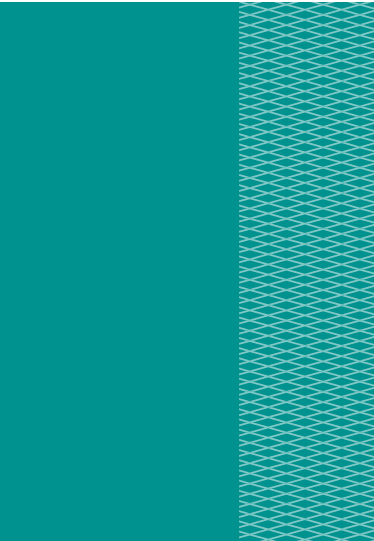


3M™ Tegaderm™ I.V. Advanced Securement Dressings  
Application and Removal Guide



Designed for  
Securement  
& Comfort

Tegaderm™ I.V. Advanced  
Part of the Full Line of Tegaderm™ Brand I.V. Site Dressings



# 3M™ Tegaderm™ I.V. Advanced Securement Dressing

## Application and Removal Techniques

3M™ Tegaderm™ I.V. Advanced Securement Dressings are comprehensively designed to deliver exceptional patient care through advanced catheter securement, superior wear time, gentle removal, and excellent moisture management. Tegaderm™ brand dressings are breathable, sterile, transparent and waterproof, and provide a barrier to external contaminants.\*

### Suggested Applications

- Short peripheral & midline venous catheters
- Central venous catheters (CVC)
  - Internal jugular (IJ) vein
  - Femoral vein
  - Subclavian vein
- Peripherally inserted central catheters (PICCs)
- Tunneled CVCs
- Implanted infusion devices (ports)
- Arterial catheters
- Dialysis catheters
- Any percutaneous device

### Dressing Selection

- Choose a dressing large enough to provide at least a one-inch margin of adherence on dry, healthy skin around the catheter site.

### Site Preparation

- Prepare the site according to your facility's protocol.
- Clipping hair at the site may improve dressing adhesion.
  - Shaving is not recommended.
- 3M™ Cavilon™ No Sting Barrier Film may be used with Tegaderm™ I.V. Advanced Securement Dressings. Apply Cavilon™ No Sting Barrier Film evenly to the skin. Avoid the area immediately surrounding the insertion site.
- **Allow all preps and protectants to dry completely before applying Tegaderm™ I.V. Advanced Securement Dressing to ensure good adhesion and prevent skin irritation.**

### Site Care

- Follow universal precautions as indicated by established protocols for infection prevention.
- Observe site daily for signs of infection or other complications.
- If infection is suspected, remove Tegaderm™ I.V. Advanced Securement Dressing, inspect the catheter site directly, and determine appropriate medical intervention.



1683



1685



1688



1689

For additional information and videos on application and removal refer to our website:

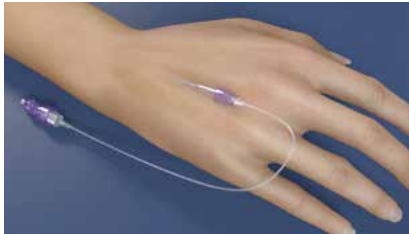
 [3M.com/tegadermiv](https://www.3M.com/tegadermiv)

# 3M™ Tegaderm™ I.V. Advanced Securement Dressing

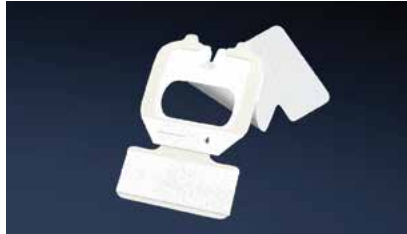
1683



## 1683 Application Technique



**1** Prepare the site according to your facility's protocol. Allow all preps and skin protectants to dry completely. Open package and remove sterile dressing.



**2** Remove liner to expose adhesive and place dressing adhesive side up on sterile field or inside of dressing package, prior to inserting catheter.



**3** Hold dressing with one hand, grasping the non-adhesive portion of the dressing. Orient clear portion of dressing over insertion site with notch ends of dressing (the "fingers" of the dressing) pointing toward the patient's fingers.



**4** Position dressing with the **top of the keyhole notch lined up with the connection point of the IV catheter hub** and IV tubing.



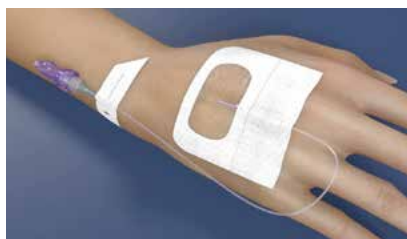
**5** Apply dressing to skin applying firm, gentle pressure to window film. Pinch film firmly around catheter tubing connection. Gently lift tubing connection and press border firmly under catheter hub.



**6** Slowly peel frame away from border edge while simultaneously applying firm pressure to border edge. Smooth entire dressing into skin to ensure optimal adhesion.



**7** Peel securement tape strip from carrier frame. Align securement strip with lower dressing edge. Press first half of securement tape strip firmly onto dressing at tubing connection site; continue strip application over tubing connection and adhere to other side.



**8** Prepare and apply documentation tape strip. *Tape strip may be used as a second securement strip* in order to create J loop with IV extension tubing.



**9** **Apply firm pressure to entire dressing** to ensure optimal adhesion.

## 1683 Removal Technique



**1** Remove securement tape strip from dressing.



**2** Gently grasp soft cloth edges below keyhole notch.



**3** Ensure IV catheter is stabilized as dressing is lifted from skin using low and slow technique.



**4** Peel dressing toward catheter insertion site.

# 3M™ Tegaderm™ I.V. Advanced Securement Dressing

1685



## 1685 Application Technique



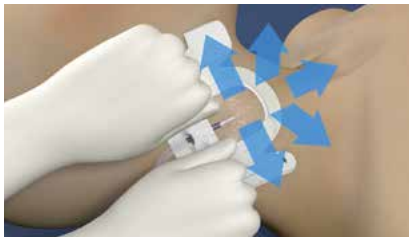
**1** Prepare the site according to your facility's protocol. Allow all preps and skin protectants to dry completely. Open package and remove sterile dressing.



**2** Remove liner to expose adhesive. Place dressing adhesive side up on sterile field or inside of dressing package.



**3** Position notch edge of dressing over catheter hub, placing stabilization border over catheter "wings." Do not stretch dressing over skin surface.



**4** Apply dressing to skin applying firm, gentle pressure to window film. Pinch film firmly around catheter tubing connection. Gently lift tubing connection and press border firmly under catheter lumens.



**5** Slowly peel frame away from border edge while simultaneously applying firm pressure to border edge. Smooth entire dressing into skin to ensure optimal adhesion.



**6** Remove securement tape strip with notch from liner. **Two small adhesive free tabs from liner will remain on tape strip liner.** Partially fold securement tape strip in half at notch.



**7** Apply tape strip's pre-cut notch completely underneath catheter's molded junction. The notch opening should face the insertion site. Peel paper tabs from liner corners. Smooth entire dressing surface; working from catheter insertion site out toward dressing edge.



**8** Prepare and apply documentation label over the top of the exposed molded junction. Press first half of strip against the junction; then adhere the other side.



**9** Apply firm pressure to entire dressing to ensure optimal adhesion.

## 1685 Removal Technique



**1** Remove all securement tape strips from dressing.



**2** Gently grasp soft cloth edges below keyhole notch.



**3** Lift dressing on each side from skin using low and slow technique.



**4** Peel dressing toward catheter insertion site until removed.

# 3M™ Tegaderm™ I.V. Advanced Securement Dressing

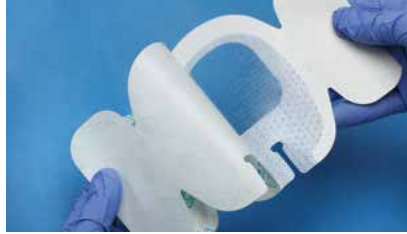
1685



## 1685 PICC Application Technique



**1** Prepare the site according to your facility's protocol. Allow all preps and skin protectants to dry completely. Open package and remove sterile dressing.



**2** Remove liner to expose adhesive. Place dressing adhesive side up on sterile field or inside of dressing package.



**3** Position notch edge of dressing over catheter hub, placing stabilization border over catheter "wings." Do not stretch dressing over skin surface.



**4** Apply dressing to skin applying firm, gentle pressure to window film. Pinch film firmly around catheter tubing connection. Gently lift tubing connection and press border firmly under catheter lumens.



**5** Slowly peel frame away from border edge while simultaneously applying firm pressure to border edge. Smooth entire dressing into skin to ensure optimal adhesion.



**6** Remove securement tape strip with notch from liner. **Two small adhesive free tabs from liner will remain on tape strip liner.** Partially fold securement tape strip in half at notch.



**7** Apply tape strip's pre-cut notch completely underneath catheter's molded junction. The notch opening should face the insertion site. Peel paper tabs from liner corners. Smooth entire dressing surface; working from catheter insertion site out toward dressing edge.



**8** Prepare and apply documentation label over the top of the exposed molded junction. Press first half of strip against the junction; then adhere the other side.



**9** Apply firm pressure to entire dressing to ensure optimal adhesion.

## 1685 PICC Removal Technique



**1** Remove all securement tape strips from dressing.



**2** Gently grasp soft cloth edges below keyhole notch.



**3** Lift dressing on each side from skin using low and slow technique. Peel dressing toward catheter insertion site until removed.

# 3M™ Tegaderm™ I.V. Advanced Securement Dressing

1688



## 1688 Application Technique



**1** Prepare the site according to your facility's protocol. Allow all preps and skin protectants to dry completely. Open package and remove sterile dressing.



**2** Remove liner to expose adhesive. Place dressing adhesive side up on sterile field or inside of dressing package.



**3** Position notch edge of dressing over catheter hub, placing stabilization border over catheter "wings." Do not stretch dressing over skin surface.



**4** Apply dressing to skin applying firm, gentle pressure to window film. Pinch film firmly around catheter tubing connection. Gently lift tubing connection and press border firmly under catheter lumens.



**5** Slowly peel frame away from border edge while simultaneously applying firm pressure to border edge. Smooth entire dressing into skin to ensure optimal adhesion.



**6** Apply tape strip's pre-cut notch completely underneath catheter's molded junction. The notch opening should face the insertion site. Smooth entire dressing surface; working from catheter insertion site out toward dressing edge.



**7** Prepare and apply documentation label over the top of the exposed molded junction. Press first half of strip against the junction; then adhere the other side.



**8** Apply firm pressure to entire dressing to ensure optimal adhesion.

## 1688 Removal Technique



**1** Remove all securement tape strips from dressing.



**2** Gently grasp soft cloth edges below keyhole notch.



**3** Lift dressing on each side from skin using low and slow technique.



**4** Peel dressing toward catheter insertion site until removed.

# 3M™ Tegaderm™ I.V. Advanced Securement Dressings



1689

## 1689 Application Technique



**1** Prepare the site according to your facility's protocol. Allow all preps and skin protectants to dry completely. Open package and remove sterile dressing.



**2** Remove liner to expose adhesive. Place dressing adhesive side up on sterile field or inside of dressing package.



**3** Position notch edge of dressing over catheter hub, placing stabilization border over catheter "wings." Do not stretch dressing over skin surface.



**4** Apply dressing to skin applying firm, gentle pressure to window film. Pinch film firmly around catheter tubing connection. Gently lift tubing connection and press border firmly under catheter lumens.



**5** Slowly peel frame away from border edge while simultaneously applying firm pressure to border edge. Smooth entire dressing into skin to ensure optimal adhesion.



**6** Remove securement tape strip with notch from liner. **Two small adhesive free tabs from liner will remain on tape strip liner.** Partially fold securement tape strip in half at notch.



**7** Apply tape strip's pre-cut notch completely underneath catheter's molded junction. The notch opening should face the insertion site. Peel paper tabs from liner corners. Smooth entire dressing surface; working from catheter insertion site out toward dressing edge.



**8** Prepare and apply documentation label over the top of the exposed molded junction. Press first half of strip against the junction; then adhere the other side.



**9** Apply firm pressure to entire dressing to ensure optimal adhesion.

## 1689 Removal Technique



**1** Remove all securement tape strips from dressing.



**2** Gently grasp soft cloth edges below keyhole notch.



**3** Lift dressing on each side from skin using low and slow technique.



**4** Peel dressing toward catheter insertion site until removed.

# 3M™ Tegaderm™ I.V. Advanced Securement Dressings

## Provides secure hold

- Reinforced border, deep notch, and tape strips work together to enlist the entire dressing in securement
- Innovative adhesives hold strongly, manage moisture, and release gently
- Designed to maintain securement by preventing edge lift, flexing with patient movement, and managing moisture

## Excellent value

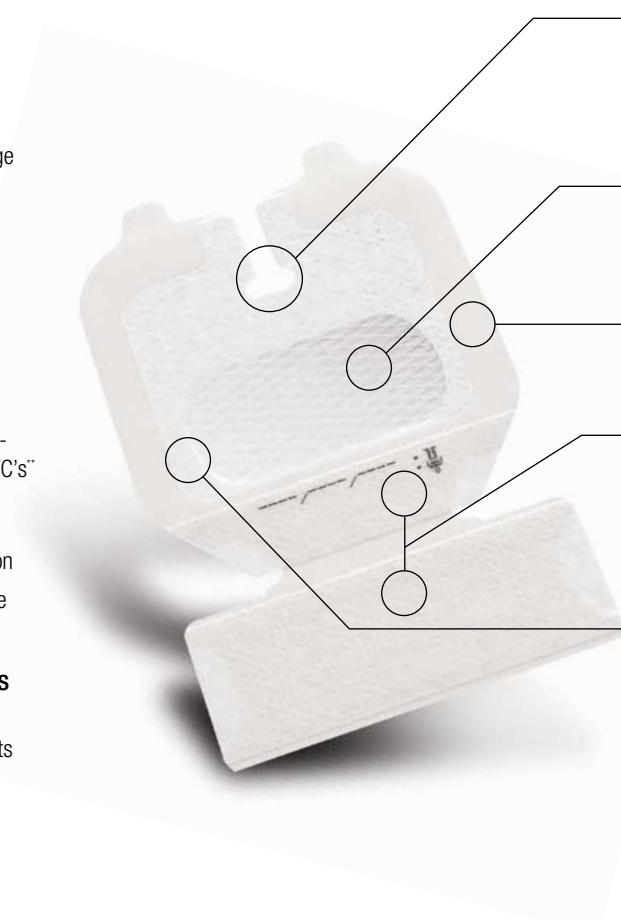
- Can potentially reduce the number of dressing changes and restarts
- May be worn for the life of a PIV catheter - Provides up to 7 days of wear time for CVC's\*\*

## Easy to apply and remove

- Designed to promote consistent application
- Frame delivery makes placement accurate and easy

## Supports infection prevention goals

- A waterproof film coating on all pieces provides a barrier to external contaminants including liquids, bacteria and viruses\*
- Allows continuous monitoring



### Deep notch

- Fits easily and conforms around hubs and lumens
- Designed to discourage edge lift
- Designed to reduce the risk of catheter manipulation and dislodgement

### Highly breathable transparent film

- Designed to release moisture quickly to provide better wear time and securement
- A waterproof, sterile barrier to external contaminants\*

### Picture-frame delivery

- Minimizes potential to stick to gloves or to itself
- One-handed application

### Securement tape strips

- Enhance securement while promoting consistent application
- Waterproof film coating
- Pre-printed documentation label for dressing changes

### Stabilization border

- Maximizes securement, breathability and wear time
- Flexible and conformable
- Reduces edge lift to maintain securement
- Waterproof film coating

\**In vitro* testing shows that the transparent film of 3M™ Tegaderm™ I.V. Advanced Securement Dressing provides a viral barrier for viruses 27 nm in diameter or larger while the dressing remains intact without leakage.

\*\*O'Grady, N et al. (2011). Guidelines for the Prevention of Intravascular Catheter-Related Infections, 2011. Retrieved from <http://www.cdc.gov/hicpac/BSI/BSFguidelines-2011.htm>. (pp. 32-35)

Not made with natural rubber latex.

To learn about Tegaderm™ I.V. Advanced Securement Dressing or the full line of Tegaderm™ Brand I.V. Site Dressings, visit us at [www.3M.com/TegadermIVBrochure](http://www.3M.com/TegadermIVBrochure), contact your 3M Critical & Chronic Care Solutions representative or call the 3M Health Care Customer Helpline at **1-800-228-3957**. Outside of the United States, contact the local 3M subsidiary.

**3M™ Tegaderm™** Dressings SIMPLE. DEPENDABLE. TRUSTED.



## Critical & Chronic Care Solutions Division 3M Health Care

2510 Conway Avenue  
St. Paul, MN 55144  
USA  
1 800 228-3957  
[3M.com/c3sd](http://3M.com/c3sd)

Please recycle. Printed in U.S.A.  
© 3M 2011, 3/2014. All rights reserved.  
3M, Cation and Tegaderm are trademarks of 3M.  
Used under license in Canada.  
70-2010-8383-2