

# **Huber Plus\***

## **Safety Infusion Set**

### **Huber Plus\* Safety Infusion Set Informational Wall Chart**

**BARD**  
ACCESS SYSTEMS



#### **Indications For Use:**

The Huber Plus\* Safety Infusion Set is a safety IV administration set with a non-coring right angle Huber needle used to access surgically implanted vascular ports. The Huber Plus\* is used to administer fluids or to withdraw blood. The Huber Plus\* facilitates safe removal of the needle by encapsulating the needle within the wings to help prevent needlestick injuries when using the device for vascular port access.

#### **Warnings:**

- When handling the Huber Plus\* Safety Infusion Set, always follow universal (infection control) precautions as specified by the CDC (U.S.A.) or local equivalent.
- Leakage may occur with Luer fitting connections over time or when disconnecting components -- use universal precautions to prevent exposure to bloodborne pathogens.
- Verify that clamp is open and that there are no kinks in the IV line before priming or initiating flow.
- If the folding wing safety feature fails to completely cover and lock the contaminated needle during removal, use care in handling the infusion set and immediately dispose of it into a sharps container.
- Do not clean, re-sterilize or reuse the Huber Plus\* Safety Infusion Set.

#### **Cautions:**

- Carefully read and follow all instructions prior to use.
- Care must be taken to avoid accidental needlesticks.
- Only qualified healthcare practitioners should insert, manipulate and remove these devices.
- High pressure or use with power injectors may cause leakage or damage.
- Confirm correct needle placement in the port reservoir by aspiration of blood before infusion of any substance. If there is doubt regarding proper needle placement, preform a radiographic dye procedure to confirm placement per institutional protocol.
- Do not remove and reinsert the needle into the port.
- Avoid excessive manipulation once the needle is in the port.
- Follow all instructions, contraindications, warnings, cautions and precautions for all infusates, ports, IV pumps, IV sets and needleless systems, as specified by the respective manufacturer.
- Follow standard infection control precautions as specified by the CDC (USA) or local equivalent.
- Do not use this product if it appears damaged or if the package has been previously opened or damaged.
- Do not access the needleless Y-injection site valve with a needle. Valve puncture may result in an embolism.

#### **SmartSite\* Needle-Free Injection Site:**

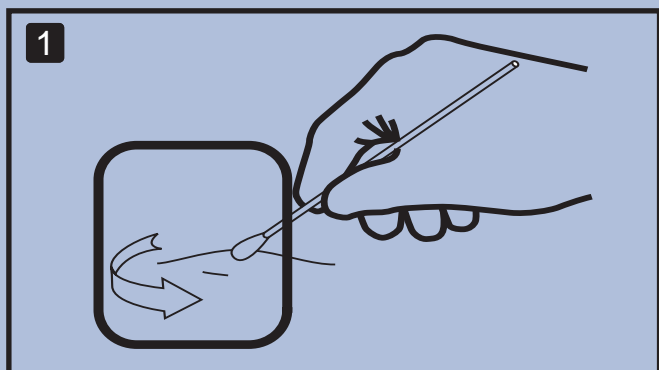
"Y" versions of the Huber Plus\* Safety Infusion Sets are supplied with SmartSite\* Y needle-free injection sites which should only be used with standard male Luer fittings on syringes or administration sets. Aseptically prepare the SmartSite\* entry port per institutional protocol before attaching a male Luer fitting. Do not insert hypodermic or blunt needles into the SmartSite.

# Huber Plus\* Safety Infusion Set

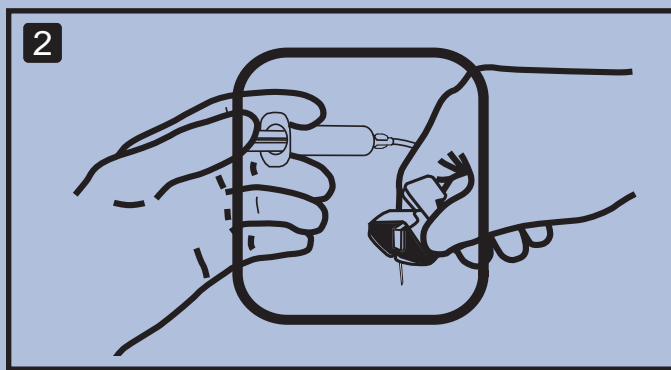
## Instructions For Use



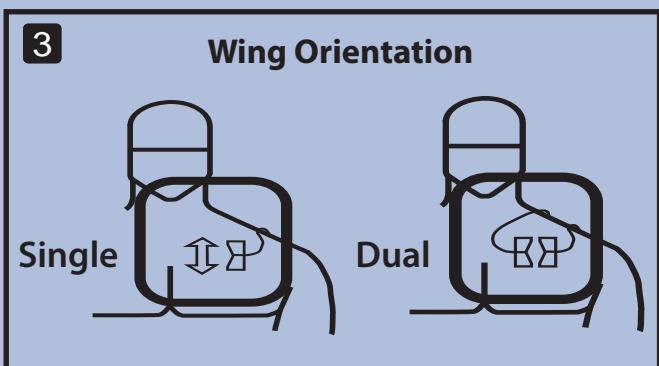
Carefully read and understand the Instructions For Use before using this device.  
Fully tighten all connections before use. Use aseptic technique.



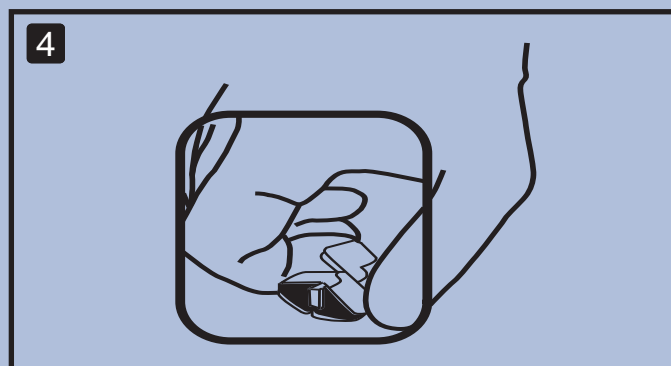
Prepare port site for sterile needle insertion.



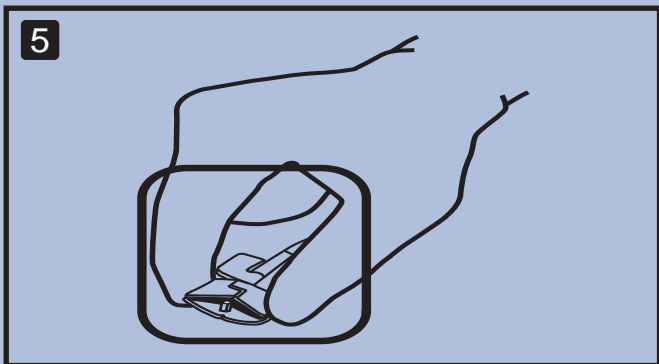
Attach a 10 cc syringe containing normal saline to the proximal Luer lock connection of the safety Huber needle infusion set. Grasp the textured handle and remove the needle cover. Prime and flush the infusion set.



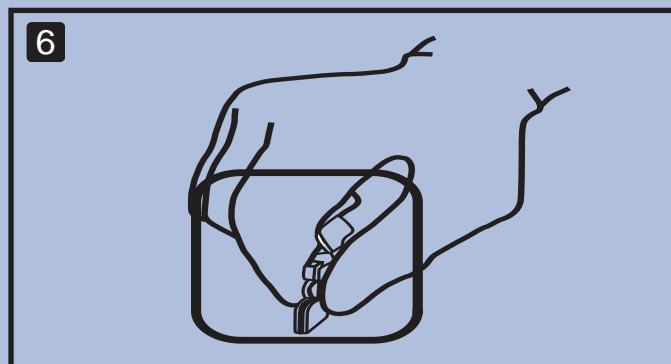
Orient the wings in single or dual ports as shown. Verify correct needle placement by aspirating for blood. Flush per institutional protocol and close clamp on the extension tubing. Secure needle to site following institutional protocol. Do not manipulate the needle once it is in the septum.



With non-dominant hand, stabilize the port. Do not grasp the vertical fin during removal. This could result in inactivation of the safety feature.



Grasp the outer edges of the wing with the thumb and side knuckle of index finger or thumb and index finger tip and lift and squeeze fingers together.



Wings will fold together and lock around the needle as it is removed from the patient. A snapping sound should be heard indicating that the wings are fully closed and locked around the needle.

**BARD**

ACCESS SYSTEMS

**Bard Access Systems**

Salt Lake City, UT 84116

[www.bardaccess.com](http://www.bardaccess.com)

**Clinical Info Hotline:** 1-800-443-3385

**Ordering Info:** 1-800-545-0890

This product and packaging do not  
contain natural rubber latex

Does not contain DEHP.

Huber Plus is a trademark and/or registered trademark of C. R. Bard, Inc.  
All other trademarks are the property of their respective owners.  
All Rights Reserved. U.S. Patent Nos: 6,585,704

MC-0447-00