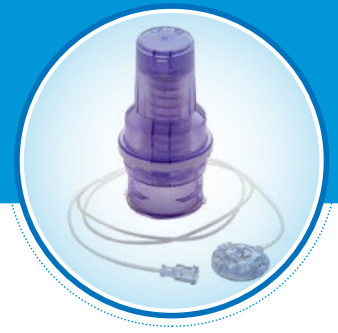
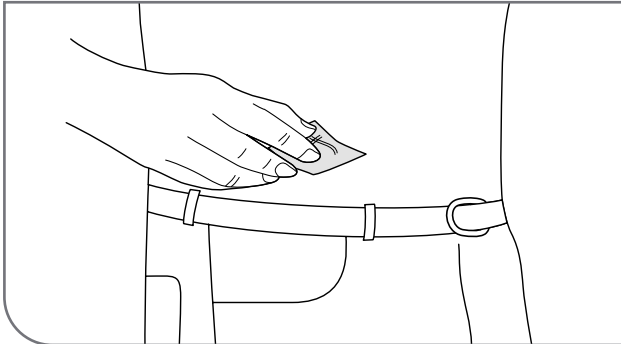


# Cleo™ 90 Infusion Set Adhesion Guide



Below are some tips you can use to help during initial application of the infusion site to make sure the Cleo 90 adheres to your skin. Remember to avoid the following at your infusion site:

- › Moisture of any kind
- › Hair; consider shaving the application area
- › Oily residue from soap or lotion

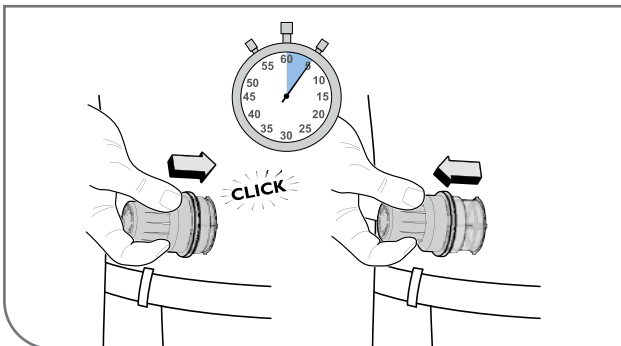


## 1. Prepare site; allow to dry.

Allow your skin to completely air dry. You may also want to consider using a product such as the following for enhanced adhesion.\*

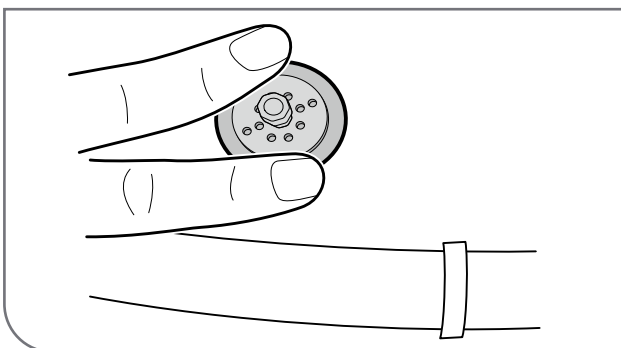
- › SKIN TACT™ (Torbot)
- › Cavilon™ No Sting Barrier Film (3M)
- › NO-STING SKIN-PREP® (Smith & Nephew)
- › Tegaderm™ Transparent Dressing (3M) - to be placed under the infusion site before insertion

Remember to allow for adequate drying time as applicable.



## 2. Press firmly until you hear a click; hold for 5 seconds; pull straight off.

Once you hear a click, hold down for at least 5 seconds. With one hand, gently pull off the applicator and with the other hand, simultaneously hold down a corner of the adhesive.



## 3. Press to secure adhesive.

Press down along the edges of the adhesive to make sure it adheres to your skin.

Cavilon is a trademark of 3M Company

SKIN TAC is a registered trademark

Tegaderm is a registered trademark of Solventum Intellectual Properties Company

SKIN-PREP is a registered trademark of Smith & Nephew, Inc.

\*This does not constitute an endorsement of the manufacturer or the product quality. ICU Medical is not responsible for the completeness or accuracy of product information. Product availability may vary by country and region. The manufacturer's instructions for use of each product should be followed.

**icumedical**  
human connections