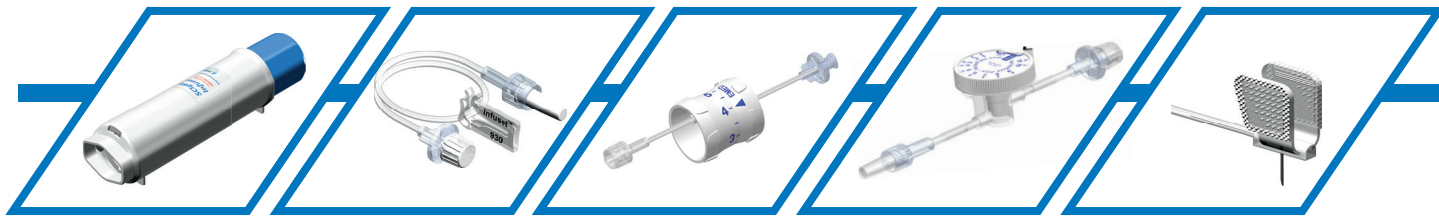


SCIG INFUSION PREPARATION MAT



Troubleshooting

Possible causes for the SCIG60 mechanical syringe pump to not perform properly are:

ISSUE	VERIFICATION	PERFORM ACTION
SYRINGE MODEL	Use correct 60 ml syringe	Use only the BD 60 ml syringe (model no. 309653).
SYRINGE POSITION	Verify the syringe is properly positioned into the infuser as instructed in the pump user manual	The syringe should be parallel to the infuser with the syringe flanges properly engaged and seen in the safety check window. (shown in the diagram)
SYRINGE COMES OUT	If syringe 'pops out' of infuser when inner drive is closed/screwed in, it is an indication that the syringe was not properly positioned in the infuser.	Unscrew the inner drive and properly position the syringe following the instructions for use.
TUBING CONNECTORS	Verify components are properly connected.	The BD 60 ml syringe (model no. 309653) is properly connected to the flow rate control infusion set and that it is correctly connected to the patient needle set.
NO FLOW	Check the flow rate control infusion set to make sure flow is not being blocked.	For Infuset, make sure that the slide clamp is not blocking the flow. For the VersaRate® or VersaRate® Plus, make sure that the dial is not on the 'OFF' position. Verify that no other clamp is blocking the flow and that the Infuset or the patient needle set is not kinked in any way.
FLOW RATE IS TOO HIGH	Verify the correct flow rate control infusion set and patient needle set combination is being used.	If using Infuset, confirm appropriate item code and patient needle set combination is being used. If using VersaRate® or VersaRate® Plus to control the flow rate, turn the dial to a lower number to reduce the flow rate. Consult the appropriate flow rate calculator to estimate expected flow rates by visiting www.versarate.com .
FLOW RATE IS TOO SLOW	Verify the correct flow rate control infusion set and patient needle set combination is being used. Note: Storage of the Infuset with the slide clamp engaged for an extended period of time may temporarily deform the tubing and decrease flow rate.	If using Infuset, confirm appropriate item code and patient needle set combination is being used, and that the Infuset or specified administration set is not kinked in any way. If using VersaRate® or VersaRate® Plus to control the flow rate, turn the dial to a higher number to increase the flow rate. Consult the appropriate flow rate calculator to estimate expected flow rates by visiting www.versarate.com .
FLOW DOES NOT STOP	Verify the flow rate control infusion set is appropriately closed.	If using the Infuset, verify that the slide clamp on the Infuset is fully closed. If using VersaRate® or VersaRate® Plus flow rate controllers, verify that the dial is turned all the way to the 'OFF' position.
BROKEN PARTS	Inspect infusion pump for any broken parts.	If after following the instructions above the SCIG60 Infuser does not appear to be working properly, or if you observe something unusual, discontinue use of the SCIG60 Infuser and contact your healthcare provider or EMED Technologies Corporation.

If any of the above conditions persist or you feel the SCIG60 mechanical syringe pump is not performing as expected, please contact your healthcare provider or EMED Technologies Corporation.



www.emedtc.com | info@emedtc.com | Telephone: 916-932-0071





Prepare the Work Area

01. Wash and dry hands thoroughly before handling any supplies, and wear gloves if instructed by your healthcare professional.
02. Create a clean work area by wiping the entire surface of this mat with a small amount of disinfectant soap and water or alcohol.
03. Let the surface air-dry and clean your work area again if it becomes contaminated during use.

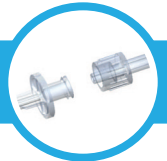


Gather Equipment

04. Refer to the steps in the instructions for use, user manuals and drug prescribing information to perform therapy treatment.
05. Make sure you have all the necessary supplies gathered in your work area prior to beginning. Generally, these supplies include:

- | | |
|--|--|
| 1. SCIG60 Infuser | 5. BD 60-mL Syringe (model no. 309653) |
| 2. Prescribed Immune Globulin Medication | 6. Patient Administration Set |
| 3. Needle or Spike | 7. Site Dressing |
| 4. Alcohol Pads | 8. Preferred Flow Rate Control Infusion Set (Infuset, VersaRate® or VersaRate® Plus) |

Have a sharps container nearby for proper disposal.



Prime and Prepare Needle Sets

06. Connect flow rate control infusion set to syringe and patient needle set.



07. Prime and close flow rate control set and patient needle set per healthcare provider instructions.



08. Refer to healthcare provider instructions to insert needle set to patient.



Prepare Infusion Pump

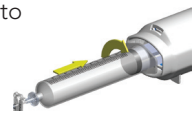
09. Open the SCIG60 Infuser by turning the handle counterclockwise until it stops.



10. Ensure that the flow rate control infusion set is clamped for Infusets or is in the 'OFF' position for VersaRate® or VersaRate® Plus.



11. Load & lock the syringe into the SCIG60 Infuser by inserting the syringe plunger & rotating the syringe clockwise until it stops.



12. Verify the syringe flange is in the window of the SCIG60 Infuser to confirm the syringe is properly locked in place.



13. Close the SCIG60 Infuser by turning the handle clockwise until the base of the handle touches the body of the pump.



Infuse

14. Complete Infusion as instructed by your health care provider. Refer to the steps in the instructions for use, user manuals and drug prescribing information to perform therapy treatment.
15. Refer to flow rate calculators at www.versarate.com to estimate expected flow rates.



Completion

16. When infusions are complete, open the SCIG60 Infuser by rotating the handle counterclockwise until it stops, then unlock and remove the syringe by turning it counterclockwise and pulling it out. Dispose of needle set, syringes and flow rate control infusion set (Infuset, VersaRate®, or VersaRate® Plus) in appropriate waste or sharps containers.

Mechanical Syringe Pump



SCIG60
Infuser
FDA • CE • CANADA

Prescribed Immune Globulin



Needle or Spike



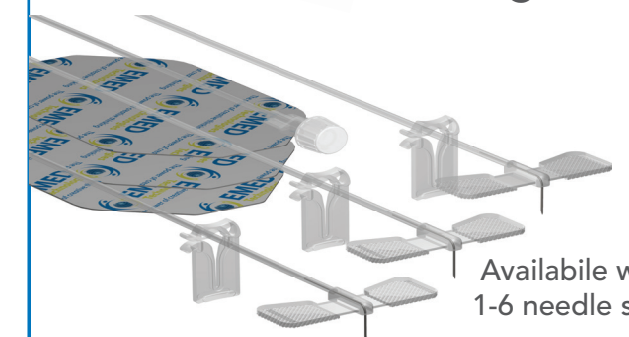
Alcohol Pads



60-mL Syringe



Patient Administration Set and Site Dressing

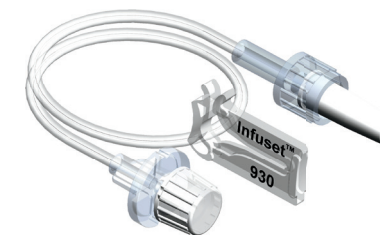


Available with 1-6 needle sites

Soft-Glide® Subcutaneous Administration Sets

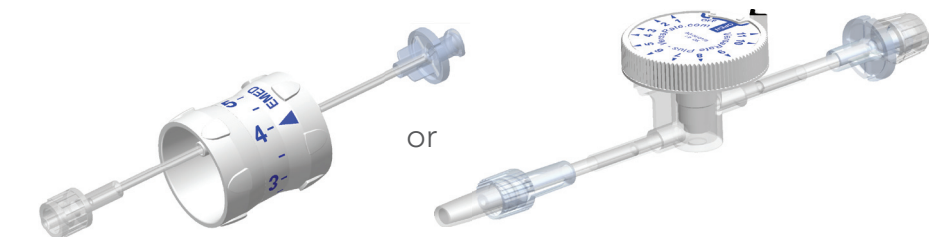
Flow Rate Control Infusion Set

Fixed Flow Rate Controller



Infuset

Adjustable Flow Rate Controller



VersaRate®

VersaRate® Plus

