

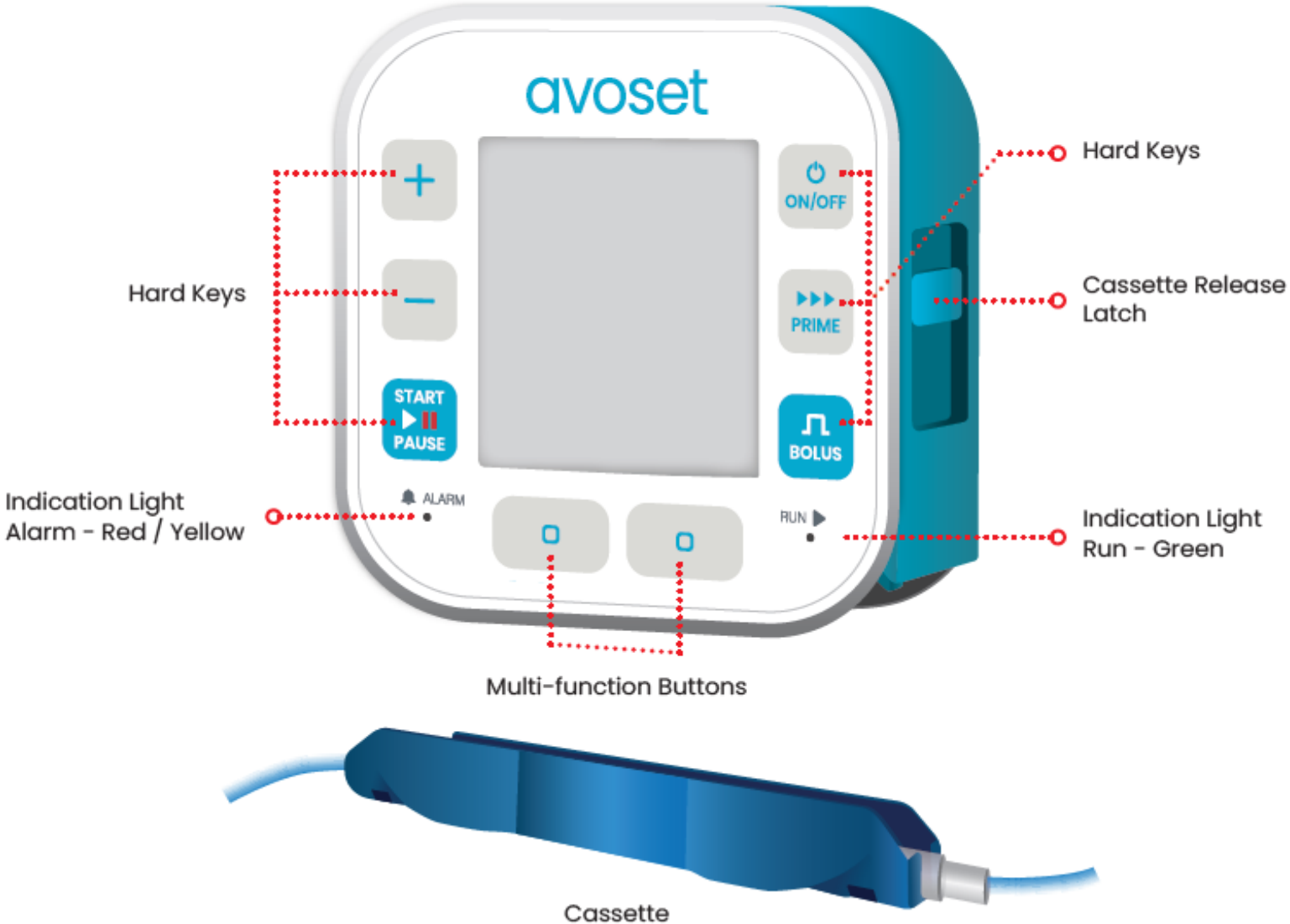


avoset™

Patient Troubleshooting Guide




Avoset Pump Layout



Pump is Paused



1. Press  to resume the infusion



2. The infusion is running

Downstream Occlusion

Reasons for an Occlusion alarm:



1. Clamps are closed



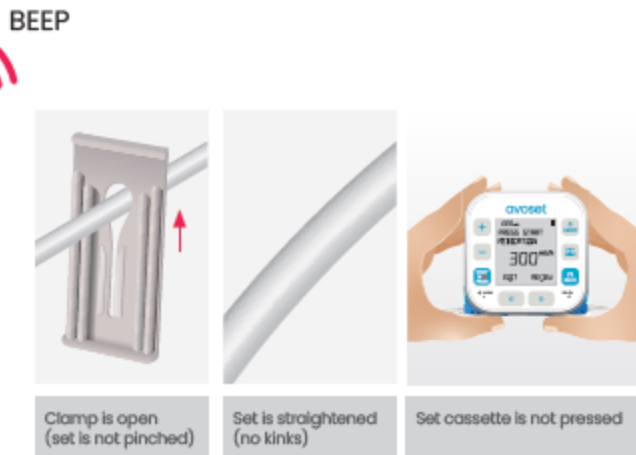
2. Set is kinked



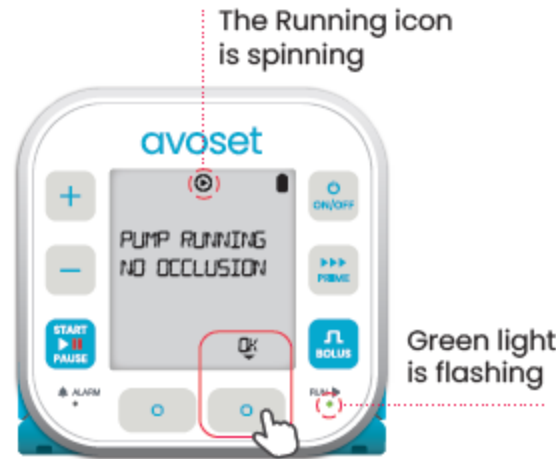
3. Administration set cassette is pressed




1. Press the MUTE multi-function button



2. Verify all reasons for occlusion were resolved (open closed clamps, straighten kinks or verify cassette is not pressed)



3. The infusion resumes automatically once the occlusion is resolved. Press OK to acknowledge. If the pump doesn't resume

automatically, press the  key to resume the infusion



4. The infusion is running

Low Battery

The batteries are about to deplete in 30 minutes for the current running infusion.



i Infusion is saved when batteries are removed, and can be resumed later.

1. Press  to pause the infusion

2. Press and hold the  key to turn off the pump



3. Press down the battery cover latch to open it



4. Remove each battery starting with the positive (+) ends



5. Insert 3 AA (1.5V) batteries according the diagram in the battery compartment. Slide the negative (-) end first, compress the spring and snap the positive (+) end into place



6. Close the battery cover. To resume infusion, turn the pump on and select RESUME multi-function button (see page 19).

Battery Depleted

The batteries are about to deplet in 3 minutes.



After 3 minutes without a proactive turn off of the pump, it will automatically turn off



i Infusion is saved when batteries are removed, and can be resumed later.

1. Press the SHUT DOWN multi-function button

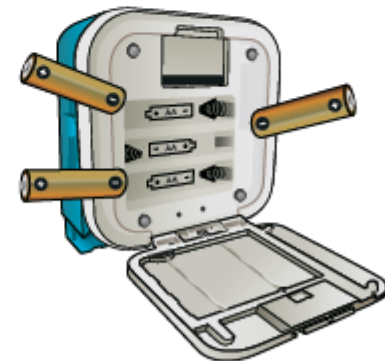
2. The pump is turned off



3. Press down the battery cover latch to open it



4. Remove each battery starting with the positive (+) ends



5. Insert 3 AA (1.5V) batteries according the diagram in the battery compartment. Slide the negative (-) end first, compress the spring and snap the positive (+) end into place



6. Close the battery cover. To resume infusion, turn the pump on and select RESUME multi-function button (see page 19).