

BLUselect® and BLUselect® Suctionaid® Tracheostomy Tubes

Sizing and Ordering Guide

smiths medical
portex®

Tracheostomy Tube Style	Cuffed Soft-Seal®	Un-cuffed	Color Code	Tube Inner Diameter (mm)	Inner Cannula Diameter (mm)	Tube Outer Diameter (mm)	Length (mm)	Cuff Resting Diameter (mm)	Inner Cannula		Jackson/Shiley Equivalent*
									Standard	Fenestrated	
BLUselect®	101/815/060	101/816/060	●	6.0	5.0	9.2	64.5	20.0	101/856/060 qty 20	101/851/060 qty 2	4
BLUselect® Fenestrated	101/817/060	101/818/060							101/858/060 qty 50		
BLUselect® Suctionaid®	101/875/060										
BLUselect®	101/815/080	101/816/080	●	8.0	7.0	11.9	75.5	30.0	101/856/080 qty 20	101/851/080 qty 2	6
BLUselect® Fenestrated	101/817/080	101/818/080							101/858/080 qty 50		
BLUselect® Suctionaid®	101/875/080										
BLUselect®	101/815/090	101/816/090	●	9.0	8.0	13.3	81.0	30.0	101/856/090 qty 20	101/851/090 qty 2	8
BLUselect® Fenestrated	101/817/090	101/818/090							101/858/090 qty 50		
BLUselect® Suctionaid®	101/875/090										
BLUselect®	101/815/100	101/816/100	●	10.0	9.0	14.0	87.5	30.0	101/856/100 qty 20	101/851/100 qty 2	10
BLUselect® Fenestrated	101/817/100	101/818/100							101/858/100 qty 50		
BLUselect® Suctionaid®	101/875/100										



Shiley to Portex® BLUselect® Tracheostomy Tube Conversion Guide

smiths medical
portex®

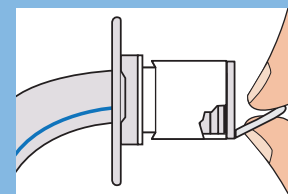
Shiley Tracheostomy Tubes in "Jackson" sizes	Portex® BLUselect® Tracheostomy Tubes in millimeters (mm)
Cuffed*	Cuffed
4DCT	101/815/060 ●
6DCT	101/815/080 ●
8DCT	101/815/090 ●
10DCT	101/815/100 ●
4LPC	101/815/060 ●
6LPC	101/815/080 ●
8LPC	101/815/090 ●
10LPC	101/815/100 ●
Uncuffed**	Uncuffed
4DCFS	101/816/060 ●
6DCFS	101/816/080 ●
8DCFS	101/816/090 ●
10DCFS	101/816/100 ●
4CFS	101/816/060 ●
6CFS	101/816/080 ●
8CFS	101/816/090 ●
10CFS	101/816/100 ●
Inner Cannula***	Inner Cannula
4DIC	101/856/060 ●
6DIC	101/856/080 ●
8DIC	101/856/090 ●
10DIC	101/856/100 ●

Tube Sizes ● 6 mm ● 8 mm ● 9 mm ● 10 mm

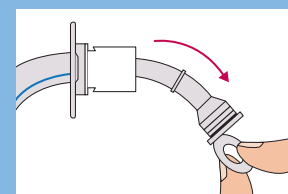
**Medtronic. (2021, June 15). <https://medtronic.com/covidien/en-us/products/tracheostomy/shiley-tracheostomy/shiley-tracheostomy-tubes-with-disposable-inner-cannula>.

***Medtronic. (2021, June 15) <https://medtronic.com/covidien/en-us/products/tracheostomy/shiley-disposable-inner-cannula>.

Removal

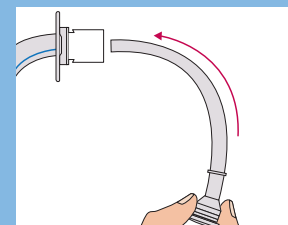


Disconnect equipment from 15 mm connector if present. Grasp the "ring pull."

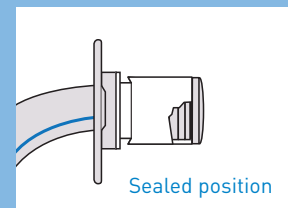


Remove the inner cannula, pulling in a down and outward motion, as indicated.

Insertion



Remove the correct size inner cannula from the sterile package. Grasp as shown and gently insert into the tracheostomy tube.



Sealed position

Gently seat the inner cannula into the 15 mm connector. A light "snap" will indicate proper position. Reconnect equipment and check for security if necessary.

Smiths Medical ASD, Inc.
6000 Nathan Lane North
Minneapolis, MN, 55442, USA
Tel: 1-614-210-7300
Toll-Free USA 1-800-258-5361
www.smiths-medical.com

PRODUCT(S) DESCRIBED MAY NOT BE LICENSED OR AVAILABLE FOR SALE IN ALL GEOGRAPHIES

Find your local contact information at: www.smiths-medical.com/customer-support

Smiths Medical is part of the global technology business Smiths Group plc. Please see the Instructions for Use/Operator's Manual for a complete listing of the indications, contraindications, warnings and precautions. Portex, BLUselect, Suctionaid and the Smiths Medical design mark are trademarks of Smiths Medical. The symbol ® indicates the trademark is registered in the U.S. Patent and Trademark Office and certain other countries. All other names and marks mentioned are the trademarks or service marks of their respective owners. ©2021 Smiths Medical. All rights reserved. CC0326.EN.AM.REVA.0621

Rx
ONLY smiths medical