

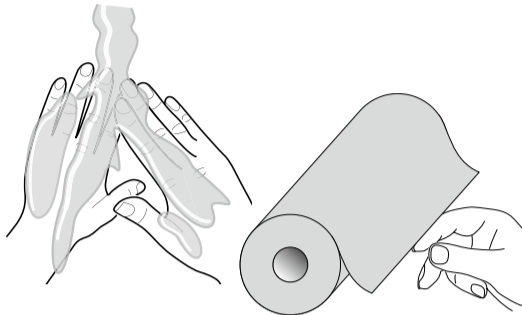


# Cleo® 90 Infusion Set Training Guide

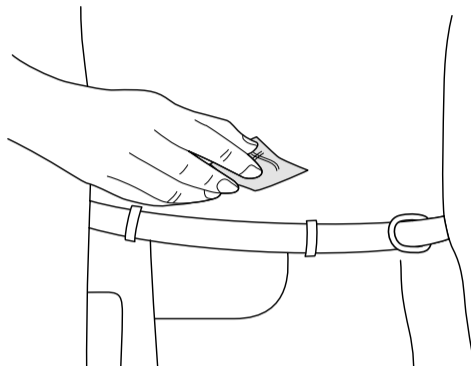
Please see Instructions for Use for a complete list of the indications, contraindications, warnings and precautions.

## TO INSERT SITE AND CONNECT TUBING SET

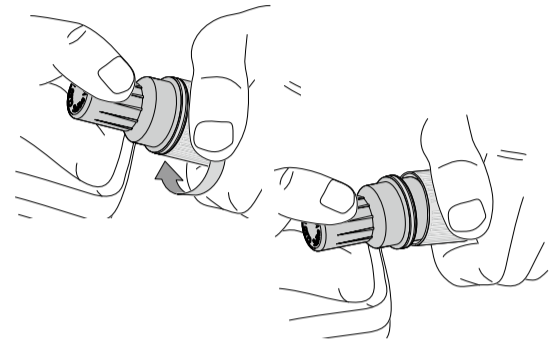
1. Wash and dry hands thoroughly.



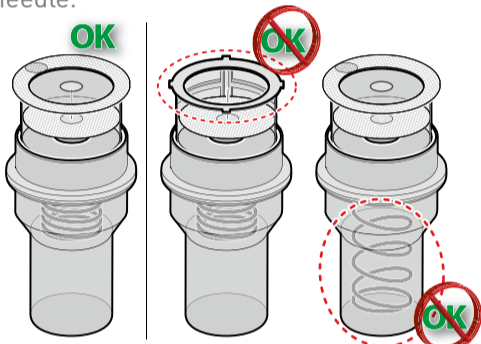
2. Prepare site, allow to dry.



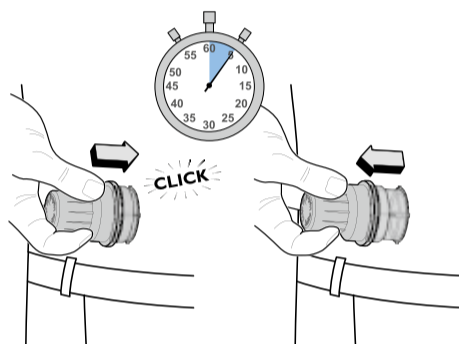
3. Twist cap to remove.



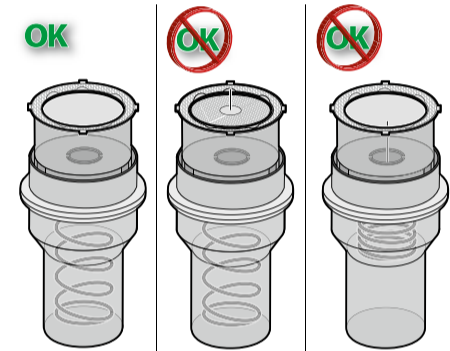
4. Inspect device for adhesive and insertion needle.



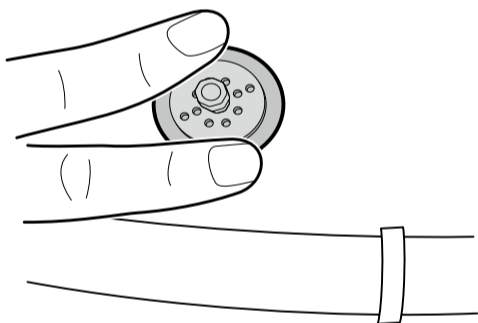
5. Press firmly until you hear a click; hold for 5 seconds; pull straight off.



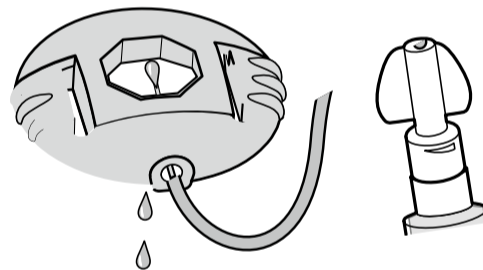
6. Verify needle retracted.



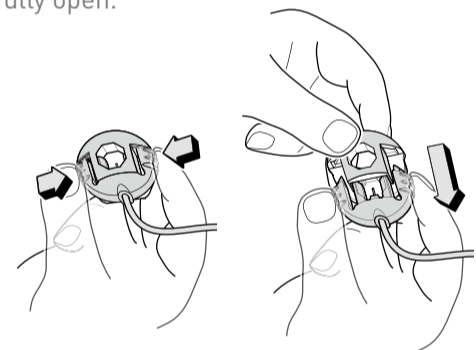
7. Press to secure adhesive.



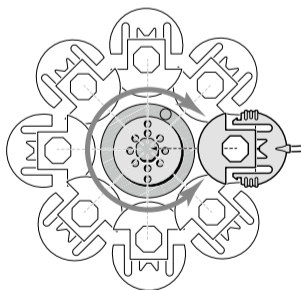
8. Connect tubing and fill according to pump User Manual.



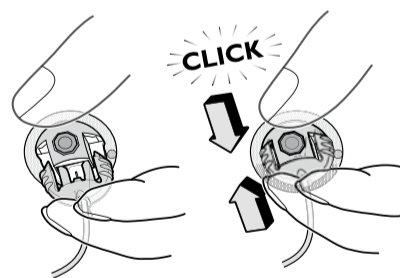
9. Pinch site connector arms inward and slide fully open.



10. Attach tubing to site, according to the most adequate position. The Cleo® 90 has eight possible positions.



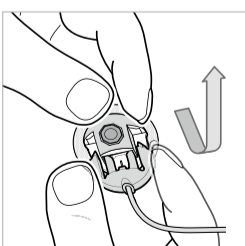
11. Close the connector, an audible click confirms closure.



12. Fill cannula with medication.

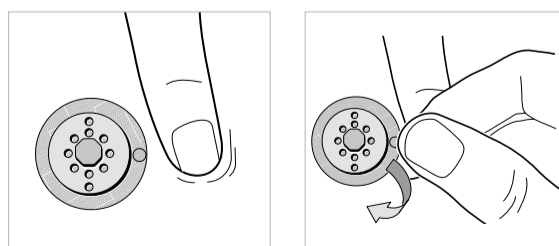
- The 6 mm cannula has 0.002 mL priming volume.
- The 9 mm cannula has 0.003 mL priming volume.

## DISCONNECTION



Open the connector by pinching the site connector arms inwards and sliding fully open.

## WITHDRAWAL OF THE INJECTION SITE



## CHANGE OF THE CLEO® 90 CATHETER

Change the catheter per your facility policy and procedures.

PRODUCT(S) DESCRIBED MAY NOT BE LICENSED OR AVAILABLE FOR SALE IN CANADA AND OTHER COUNTRIES

Smiths Medical International  
1500 Eureka Park, Lower Pemberton  
Ashford Kent, TN25 4BF  
Tel: +44 (0)845 850 0445

Smiths Medical ASD, Inc.  
6000 Nathan Lane North  
Minneapolis, MN, 55442, USA  
Tel: 1-614-210-7300  
Toll-Free USA 1-800-258-5361  
[www.smiths-medical.com](http://www.smiths-medical.com)

Find your local contact information at: [www.smiths-medical.com/customer-support](http://www.smiths-medical.com/customer-support)

Smiths Medical is part of the global technology business Smiths Group plc. Please see the Instructions for Use/Operator's Manual for a complete listing of the indications, contraindications, warnings and precautions. Cleo and the Smiths Medical design mark are trademarks of Smiths Medical. The symbol ® indicates the trademark is registered in the U.S. Patent and Trademark Office and certain other countries. All other names and marks mentioned are the trademarks or service marks of their respective owners. Product referenced is CE-marked. ©2019 Smiths Medical. All rights reserved. IN193874GB-092019

MMSPCA-0046

Rx ONLY CE 2797

smiths medical