



IMedTM Products

Product Catalog 2025





Integrated Medical Systems (IMS), is the exclusive distribution network for IMed Products™, offering nationwide access through our 12 strategically-located distribution and biomedical service centers. Cultivated to help offset the continuation of rising costs, this board range of medical disposables combines innovation and value, ensuring healthcare providers have reliable, high-quality solutions to meet their needs seamlessly.

Nationwide Coverage with 12 Distribution & Biomedical Service Centers



INFUSION

Infusion is central to our expertise, driving the development of our high-quality disposable products. From elastomeric pumps, kits, dressings and more, IMed Products™ has you covered.

ONCOLOGY

We know the added risk of combining hazardous drugs; that's why we specifically designed products to keep your patients and you safe.

ENTERAL

The ENFit® Line provides high-quality feeding solutions for healthcare professionals and caregivers, offering reliable tools to assist patients who need feeding support.

CONTENTS

02	EZ-FLOW™ ELASTOMERICS
05	SHORT DURATION EZ-FLOW™
06	LONG DURATION EZ-FLOW™
07	CHEMOTHERAPY EZ-FLOW™*
08	IMED KITS OVERVIEW
09	IV START KITS
12	DRESSING CHANGE KITS
21	MISCELLANEOUS KITS
22	SPILL KITS*
23	CONVENIENCE KITS
25	CLEO™ 90 INFUSION SETS
26	IV ADMINISTRATION SETS
27	DUAL-FUNCTION END CAPS
28	EXTENSION SETS
29	EVA GRAVITY BAGS
30	BANDAGES & DRESSINGS
31	IMED GUARD
32	EMPTY SYRINGES
32	ENFit® SYRINGES**
33	DISINFECTANTS*
34	BACKPACKS & POUCHES**

*IMed Products™ Oncology Line

**IMed Products™ Enteral Line

ENFit® is a registered mark for ISO 80369-3 Enteral Connector Standard

Cleo™ is a trademark of ICU Medical.

EZ FLOW™

E L A S T O M E R I C P U M P

EZ-FLOW™ Elastomeric Pumps are proven to be a safe, effective, and convenient alternative to electronic infusion pumps. Ideally suited for infusion, long-term care, and outpatient chemotherapy treatments, EZ-FLOW™ gives the patient mobility and freedom to maintain an active lifestyle without the use of batteries.

The balloon-like reservoir exerts mechanical pressure, which administers the medication at a controlled flow rate, determined by the restrictor and tubing.

Several environmental factors may impact the flow rate, resulting in shorter or longer infusion times during treatment. When filled to the label volume, the EZ-FLOW™ Elastomeric Pump accuracy is within 15%.

IMed Products™ offers a wide range of sizes and flow rates along with extensive drug stability data, offering dosing flexibility across various infusion therapies.



Want to Learn More?

Explore our EZ-FLOW™ Elastomeric library and learn more about product features, benefits and best practices at integratedmedsys.com/elastomerics



Infuse Medications Without Electronic Pump Hassles

Patient Freedom

Offer a safe and effective way to deliver infused medications while allowing patients freedom to live their day-to-day lives without the worry of programming or battery power.

Color-Coded Flow Rate

EZ-FLOW™ Elastomerics are color-coded to easily identify flow rate, reducing the risk of administration error.

Sleek Design

DEHP-free and not made with natural latex, these sterile, single-use pumps are transparent (amber for chemotherapy) and include a tethered end cap and pinch clamp to aid in effective administration.

Priming Cap Efficiencies

Long duration and chemotherapy pumps are equipped with a priming cap, increasing

pharmacy efficiencies and reducing the time required to prime.

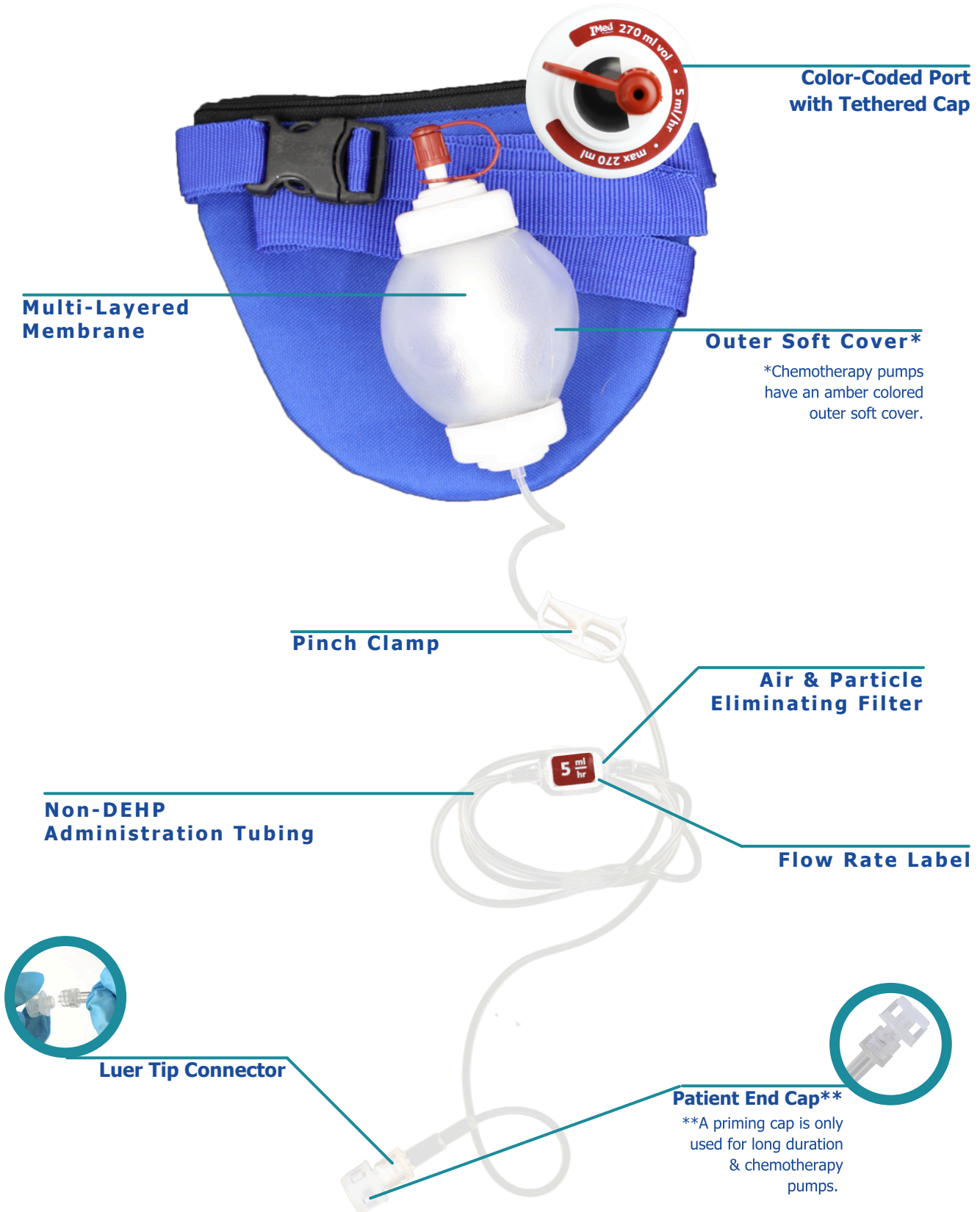
Versatile Drug Compatibility

USFDA clearance certifies these pumps safe for a wide range of medical applications, including infusion, long-term care, and chemotherapy treatments.



EZ-FLOW™ DIAGRAM

ELASTOMERICS



SHORT DURATION

- Not Made with Natural Rubber Latex
- DEHP-Free
- Sterile-Packed
- Single-Use Only
- Color-Coded by Flow Rate
- Pinch Clamp
- 1.2 Micron Particle Filter
- 0.03 Micron Air Filter

EZ FLOW™
ELASTOMERIC PUMP



50 mL/hr	100 mL/hr	125 mL/hr	175 mL/hr	200 mL/hr	250 mL/hr	500 mL/hr
-------------	--------------	--------------	--------------	--------------	--------------	--------------

Order Information

Item #	Fill Volume	Flow Rate	Color Code	UOM
IM050050S	50mL	50 mL/Hr	●	24/Case
IM100050S	100mL	50 mL/Hr	●	24/Case
IM100100S	100mL	100 mL/Hr	○	24/Case
IM100200S	100mL	200 mL/Hr	●	24/Case
IM200100S	200mL	100 mL/Hr	○	24/Case
IM200200S	200mL	200 mL/Hr	●	24/Case
IM250050S	250mL	50 mL/Hr	●	24/Case
IM250100S	250mL	100 mL/Hr	○	24/Case
IM250125S	250mL	125 mL/Hr	●	24/Case
IM250175S	250mL	175 mL/Hr	●	24/Case
IM250250S	250mL	250 mL/Hr	●	24/Case
IM250500S	250mL	500 mL/Hr	●	24/Case
IM270175S	270mL	175 mL/Hr	●	24/Case
IM400100S	400mL	100 mL/Hr	○	24/Case
IM400200S	400mL	200 mL/Hr	●	24/Case
IM500250S	500mL	250 mL/Hr	●	24/Case

ELASTOMERICS



LONG DURATION



- Not Made with Natural Rubber Latex
- DEHP-Free
- Sterile-Packed
- Single-Use Only
- Color-Coded by Flow Rate
- Pinch Clamp
- Priming Cap
- 1.2 Micron Particle Filter
- 0.03 Micron Air Filter



PRIMING CAP

The priming cap eliminates the use of the pinch clamp and removal of patient end cap when priming.



1 mL/hr	2 mL/hr	4 mL/hr	5 mL/hr	10 mL/hr	20 mL/hr
------------	------------	------------	------------	-------------	-------------

Order Information

Item #	Fill Volume	Flow Rate	Color Code	UOM
IM060005L	60mL	5 mL/Hr	●	24/Case
IM100002L	100mL	2 mL/Hr	●	24/Case
IM100005L	100mL	5 mL/Hr	●	24/Case
IM125005L	125mL	5 mL/Hr	●	24/Case
IM270001L	270mL	1 mL/Hr	●	24/Case
IM270002L	270mL	2 mL/Hr	●	24/Case
IM270004L	270mL	4 mL/Hr	●	24/Case
IM270005L	270mL	5 mL/Hr	●	24/Case
IM270010L	270mL	10 mL/Hr	●	24/Case
IM500020L	500mL	20 mL/Hr	●	24/Case



integratedmedsys.com | 800.755.3800



CHEMOTHERAPY

EZ FLOW™
ELASTOMERIC PUMP

- Not Made with Natural Rubber Latex
- DEHP-Free
- Sterile-Packed
- Single-Use Only
- Chemotherapy Rated Amber
- Color-Coded by Flow Rate
- Pinch Clamp
- Priming Cap
- 1.2 Micron Particle Filter
- 0.03 Micron Air Filter



ELASTOMERICS

PRIMING CAP

The priming cap eliminates the use of the pinch clamp and removal of patient end cap when priming.



2 mL/hr	5 mL/hr	6 mL/hr	10 mL/hr
------------	------------	------------	-------------

Order Information

Item #	Fill Volume	Flow Rate	Color Code	UOM
IM100002C	100mL	2 mL/Hr	●	12/Case
IM125005C	125mL	5 mL/Hr	●	12/Case
IM270002C	270mL	2 mL/Hr	●	12/Case
IM270005C	270mL	5 mL/Hr	●	12/Case
IM270010C	270mL	10 mL/Hr	●	12/Case
IM300006C	300mL	6 mL/Hr	●	12/Case



integratedmedsys.com | 800.755.3800

IMed™
Products

IMED PRODUCTS™ KITS

Elevate Healthcare Efficiency with IMed Products™ Kits

Precision in Every Package

Ensure seamless procedures with exact quantities of essential supplies while maintaining the highest standards of hygiene and patient safety through sterile packaging.

Optimized Workflow, Enhanced Care

Streamline processes, improving overall efficiency, and reduce time spent on procurement and inventory management, enabling greater focus on patient care.

Cost-Effective Solutions

Discover cost-saving benefits by minimizing waste and maximizing resource utilization while providing affordable options without compromising quality, allowing for better allocation of financial resources.

Explore our extensive range of Specialized Kits

- IV Start Kits...p9
- Dressing Change Kits...p12
- Spill Kits...p22
- Convenience Kits...p23



Have Unique Needs?

Reach out to your Territory Manager to see if curating a custom kit will meet your needs.



IV START KIT MATRIX

	IM1200C	IM1205C	IM1207C	IM1252	IM2200C	IM2201
Gloves, Nitrile	1	1	1	1	1	1
Tourniquet	1	1	1	1	1	1
Tape, Roll	1	1	1	1	1	1
Dressing #1614	1		1			
Dressing #9534HP		1		1		
Dressing #LMP14					1	1
Gauze, 2x2	2	2		2	2	2
Non-Woven Sponge			2			
Towel			1			
Alcohol Prep Pad		1		1		1
PVP Prep Pad				1		
Prevantics™ Swab	1				1	
ChloroPrep™, 1mL			1			1
ChloroPrep™, Frepp™		1				
UOM	50/Case	50/Case	50/Case	100/Case	50/Case	50/Case

IV START KIT MATRIX

Prevantics™ is a trademark of PDI and is used under license.
ChloroPrep™ and FREPP™ are registered trademarks of Becton Dickinson and Company or its affiliates.

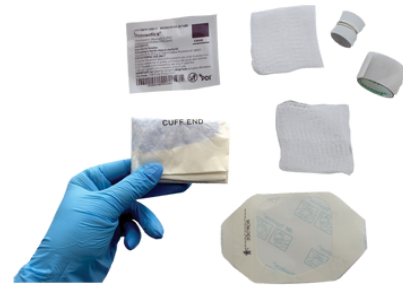


IV START KITS

IV START KIT WITH PREVANTICS™

ITEM #: IM1200C

- 1 Pair of Gloves
- 1 Tourniquet
- 1 Roll of Tape
- 2 Gauze, 2" x 2"
- 1 Prevantics™ Swab
- 1 Tegaderm™ Transparent Dressing, #1614



Item #	Description	UOM
IM1200C	IV Start Kit with Prevantics™	50/Case

IV START KIT WITH CHLORAPREP™ FREPP™

ITEM #: IM1205C

- 1 Pair of Gloves
- 1 Tourniquet
- 1 Roll of Tape
- 2 Gauze, 2" x 2"
- 1 Alcohol Prep Pad
- 1 Chloraprep™ Frepp™, 1.5mL
- 1 Tegaderm™ Transparent Dressing, #9534HP



Item #	Description	UOM
IM1205C	IV Start Kit with Chloraprep™ Frepp™	50/Case

IV START KIT WITH CHLORAPREP™ 1ML

ITEM #: IM1207C

- 1 Pair of Gloves
- 1 Towel
- 1 Tourniquet
- 1 Roll of Tape
- 2 Gauze Sponges, 2" x 2"
- 1 Chloraprep™, 1mL
- 1 Tegaderm™ Transparent Dressing, #1614



Item #	Description	UOM
IM1207C	IV Start Kit with Chloraprep™	50/Case

Prevantics™ is a trademark of PDI and is used under license.
 Tegaderm™ is a trademark of 3M™ and is used under license.
 Chloraprep™ and FREPP™ are registered trademarks of Becton Dickinson and Company or its affiliates.



IV START KITS

IV START KIT WITH PVP PREP PAD

ITEM #: IM1252

- 1 Pair of Gloves
- 1 Tourniquet
- 1 Roll of Tape
- 2 Gauze, 2" x 2"
- 1 Alcohol Prep Pad
- 1 PVP Prep Pad
- 1 Tegaderm™ Transparent Dressing, #9534HP



Item #	Description	UOM
IM1252	IV Start Kit with PVP Prep Pad	100/Case

IV START KIT WITH CHLORAPREP™ 1ML

ITEM #: IM2201

- 1 Pair of Gloves
- 1 Tourniquet
- 1 Roll of Tape
- 2 Gauze, 2" x 2"
- 1 Alcohol Prep Pad
- 1 ChloraPrep™, 1mL
- 1 Tegaderm™ Transparent Dressing, #LMP14



Item #	Description	UOM
IM2201	IV Start Kit with ChloraPrep™, 1mL	50/Case

Tegaderm™ is a trademark of 3M™ and is used under license.
ChloraPrep™ is a registered trademark of Becton Dickinson and Company or its affiliates.



DRESSING CHANGE KIT MATRIX

DRESSING CHANGE KITS

	IM1210	IM1211	IM1212	IM1219	IM1222	IM1250	IM46023
Gloves, Nitrile	1	1	1	1	1	1	2
Mask	1	1	1	1	1	1	2
Towel	1	1	1	1	1	1	1
Tape Measure	1	1	1	1	1	1	1
Dressing Change Label							
Tape, Roll	1	1	1	1	1	1	1
Tape, Strips							
Dressing #1626W	1	1	1				
Dressing #1616					1	1	1
Dressing #1658				1			
Dressing #1688							
Dressing #1877-2100							
Grip-Lok™ #3300MWA							
StatLock™ #PIC0220							1
Skin Protectant Pad							
					1		
ChloroPrep™, 3mL			1	1	1		1
ChloroPrep™ Swabs, 3/Pack		1				1	
Cavilon™ Skin Prep						1	
PVP Swabs, 3/Pack	1						
Alcohol Prep Pad		2	2	2	2	2	2
Alcohol Swabs, 3/Pack	1						1
4mm Disc with CHG							
Gauze, 2" x 2"	1	1	1	1	1	1	
Gauze, 4" x 4"	1	1	1	1	1	1	1
Gauze, Non-Woven Split	1	1	1		1	1	1
Gauze, Non-Adherent	1	1	1	1	1	1	1
UOM	30/Case	30/Case	30/Case	20/Case	30/Case	30/Case	30/Case

Grip-Lok™ is a registered trademark of TIDI Products, LLC.
 ChloroPrep™ and StatLock™ are registered trademarks of Becton Dickinson and Company or its affiliates.
 Cavilon™ is a registered trademark of 3M and is used under license.



integratedmedsys.com | 800.755.3800



DRESSING CHANGE KIT MATRIX

IM46032-C	IM46061	IM46062	IM46113	IM46120	IM46121	IM46122	
2	1	1	1	1	1	1	Gloves, Nitrile
1	1	1	1	1	1	1	Mask
1	1	1	1	1	1	1	Towel
1	1	1	1	1	1	1	Tape Measure
	1				1		Dressing Change Label
1	1	1	1		1	1	Tape, Roll
				1			Tape, Strips
							Dressing #1626W
	1	1	1		1	1	Dressing #1616
							Dressing #1658
				1			Dressing #1688
1							Dressing #1877-2100
					1	1	Grip-Lok™ #3300MWA
	1						StatLock™ #PIC0220
							Skin Protectant Pad
1	1	1			1	1	ChloroPrep™, 3mL
			1	1			ChloroPrep™ Swabs, 3/Pack
				1			Cavilon™ Skin Prep
			1				PVP Swabs, 3/Pack
2	2	2			2	2	Alcohol Prep Pad
	1	1		1	1	1	Alcohol Swabs, 3/Pack
	1	1			1		4mm Disc with CHG
2		1		1			Gauze, 2" x 2"
2	2	1	1	1	2	1	Gauze, 4" x 4"
		1	1	1		1	Gauze, Non-Woven Split
		1		1		1	Gauze, Non-Adherent
30/Case	30/Case	30/Case	30/Case	30/Case	30/Case	30/Case	UOM

Grip-Lok™ is a registered trademark of TIDI Products, LLC.
 ChloroPrep™ and StatLock™ are registered trademarks of Becton Dickinson and Company or its affiliates.
 Cavilon™ is a registered trademark of 3M and is used under license.



DRESSING CHANGE KITS

DRESSING CHANGE KITS

DRESSING CHANGE KIT WITH PVP SWABS

ITEM #: IM1210

- 1 Pair of Gloves
- 1 Mask
- 1 Roll of Tape
- 1 Towel
- 1 Tape Measure
- 1 Gauze, 2" x 2"
- 1 Gauze, 4" x 4"
- 1 Non-Adherent Gauze, 2" x 2"
- 1 Split Non-Woven Gauze, 2" x 2"
- 1 Alcohol Swabsticks, 3/Pack
- 1 PVP Swabsticks, 3/Pack
- 1 Tegaderm™ Transparent Dressing, #1626W



Item #	Description	UOM
IM1210	Dressing Change Kit with PVP Swabs	30/Case

DRESSING CHANGE KIT WITH CHLORAPREP™ SWABS

ITEM #: IM1211

- 1 Pair of Gloves
- 1 Mask
- 1 Roll of Tape
- 1 Towel
- 1 Tape Measure
- 1 Gauze, 2" x 2"
- 1 Gauze, 4" x 4"
- 1 Non-Adherent Gauze, 2" x 2"
- 1 Split Non-Woven Gauze, 2" x 2"
- 2 Alcohol Prep Pads
- 1 ChloraPrep™ Swabsticks, 3/Pack
- 1 Tegaderm™ Transparent Dressing, #1626W



Item #	Description	UOM
IM1211	Dressing Change Kit with ChloraPrep™ Swabs	30/Case

Tegaderm™ is a trademark of 3M™ and is used under license.
ChloraPrep™ is a registered trademark of Becton Dickinson and Company or its affiliates.



DRESSING CHANGE KITS

DRESSING CHANGE KIT WITH CHLORAPREP™ 3ML

ITEM #: IM1212

- 1 Pair of Gloves
- 1 Mask
- 1 Roll of Tape
- 1 Towel
- 1 Tape Measure
- 1 Gauze, 2" x 2"
- 1 Gauze, 4" x 4"
- 1 Non-Adherent Gauze, 2" x 2"
- 1 Split Non-Woven Gauze, 2" x 2"
- 2 Alcohol Prep Pads
- 1 ChloraPrep™, 3mL
- 1 Tegaderm™ Transparent Dressing, #1626W



Item #	Description	UOM
IM1212	Dressing Change Kit with ChloraPrep™	30/Case

DRESSING CHANGE KIT WITH CHG DRESSING

ITEM #: IM1219

- 1 Pair of Gloves
- 1 Mask
- 1 Roll of Tape
- 1 Towel
- 1 Tape Measure
- 1 Gauze, 2" x 2"
- 1 Gauze, 4" x 4"
- 1 Non-Adherent Gauze, 2" x 2"
- 2 Alcohol Prep Pads
- 1 ChloraPrep™, 3mL
- 1 Tegaderm™ Transparent Dressing with CHG, #1658



Item #	Description	UOM
IM1219	Dressing Change Kit with CHG Dressing	20/Case

ChloraPrep™ is a registered trademark of Becton Dickinson and Company or its affiliates.
Tegaderm™ is a trademark of 3M™ and is used under license.



DRESSING CHANGE KITS

DRESSING CHANGE KITS

DRESSING CHANGE KIT WITH CHLORAPREP™ 3ML

ITEM #: IM1222

- 1 Pair of Gloves
- 1 Mask
- 1 Roll of Tape
- 1 Towel
- 1 Tape Measure
- 1 Gauze, 2" x 2"
- 1 Gauze, 4" x 4"
- 1 Non-Adherent Gauze, 2" x 2"
- 1 Split Non-Woven Gauze, 2" x 2"
- 2 Alcohol Prep Pads
- 1 Skin Protectant Pad
- 1 ChloraPrep™, 3mL
- 1 Tegaderm™ Transparent Dressing, #1616



Item #	Description	UOM
IM1222	Dressing Change Kit with ChloraPrep™, 3mL	30/Case

DRESSING CHANGE KIT WITH CHLORAPREP™ SWABS

ITEM #: IM1250

- 1 Pair of Gloves
- 1 Mask
- 1 Roll of Tape
- 1 Towel
- 1 Tape Measure
- 1 Gauze, 2" x 2"
- 1 Gauze, 4" x 4"
- 1 Non-Adherent Gauze, 2" x 2"
- 1 Split Non-Woven Gauze, 2" x 2"
- 2 Alcohol Prep Pads
- 1 Skin Prep Pad
- 1 ChloraPrep™ Swabsticks, 3/Pack
- 1 Tegaderm™ Transparent Dressing, #1616



Item #	Description	UOM
IM1250	Dressing Change Kit with ChloraPrep™ Swabs	30/Case

ChloraPrep™ is a registered trademark of Becton Dickinson and Company or its affiliates.
Tegaderm™ is a trademark of 3M™ and is used under license.



integratedmedsys.com | 800.755.3800



DRESSING CHANGE KITS

DRESSING CHANGE KIT WITH STATLOCK™

ITEM #: IM46023

- 2 Pairs of Gloves
- 2 Masks
- 1 Roll of Tape
- 1 Towel
- 1 Tape Measure
- 1 Gauze, 4" x 4"
- 1 Non-Adherent Gauze, 2" x 2"
- 1 Non-Woven Split Gauze, 2" x 2"
- 2 Alcohol Prep Pads
- 1 Alcohol Swabsticks, 3/Pack
- 1 Chloraprep™, 3mL
- 1 StatLock™ PICC Plus with Skin Prep, #PIC0220
- 1 Tegaderm™ Transparent Dressing, #1616



Item #	Description	UOM
IM46023	Dressing Change Kit with StatLock™	30/Case

DRESSING CHANGE KIT WITH CHLORAPREP™

ITEM #: IM46032-C

- 2 Pairs of Gloves
- 1 Mask
- 1 Roll of Tape
- 1 Towel
- 1 Tape Measure
- 2 Non-Woven Gauze, 2" x 2"
- 2 Non-Woven Gauze, 4" x 4"
- 2 Alcohol Prep Pads
- 1 Chloraprep™, 3mL
- 1 Tegaderm™ Transparent Dressing with CHG, #1877-2100



Item #	Description	UOM
IM46032-C	Dressing Change Kit with Chloraprep™	30/Case

StatLock™ and Chloraprep™ are registered trademarks of Becton Dickinson and Company or its affiliates. Tegaderm™ is a trademark of 3M™ and is used under license.



DRESSING CHANGE KITS

DRESSING CHANGE KITS

DRESSING CHANGE KIT WITH STATLOCK™ & HALOGUARD™

ITEM #: IM46061

- 1 Pair of Gloves
- 1 Mask
- 1 Roll of Tape
- 1 Towel
- 1 Tape Measure
- 2 Gauze, 4" x 4"
- 2 Alcohol Prep Pads
- 1 Alcohol Swabsticks, 3/Pack
- 1 Chloraprep™, 3mL
- 1 Dressing Change Label
- 1 StatLock™ PICC Plus with Skin Prep, #PIC0220
- 1 HALOGuard™, 1" with 4mm Insert
- 1 Tegaderm™ Transparent Dressing, #1616



Item #	Description	UOM
IM46061	Dressing Change Kit with StatLock™ & HALOGuard™	30/Case

DRESSING CHANGE KIT WITH CHLORAPREP™ 3ML & HALOGUARD™

ITEM #: IM46062

- 1 Pair of Gloves
- 1 Mask
- 1 Roll of Tape
- 1 Towel
- 1 Tape Measure
- 1 Gauze, 4" x 4"
- 1 Non-Adherent Gauze, 2" x 2"
- 1 Non-Woven Gauze, 2" x 2"
- 1 Split Non-Woven Gauze, 2" x 2"
- 2 Alcohol Prep Pads
- 1 Alcohol Swabsticks, 3/Pack
- 1 Chloraprep™, 3mL
- 1 HALOGuard™, 1" Disc with 4mm Insert
- 1 Tegaderm™ Transparent Dressing, #1616



Item #	Description	UOM
IM46062	Dressing Change Kit with Chloraprep™ & HALOGuard™	30/Case

StatLock™ and Chloraprep™ are registered trademarks of Becton Dickinson and Company or its affiliates.
 HALOGuard™ is a trademark of ATTWILL Medical Solutions.
 Tegaderm™ is a trademark of 3M™ and is used under license.



integratedmedsys.com | 800.755.3800



DRESSING CHANGE KITS

DRESSING CHANGE KIT WITH CHLORAPREP™ SWABS

ITEM #: IM46113

- 1 Pair of Gloves
- 1 Mask
- 1 Roll of Tape
- 1 Towel
- 1 Tape Measure
- 1 Gauze, 4" x 4"
- 1 Split Non-Woven Gauze, 2" x 2"
- 1 Skin Protectant Swabstick
- 1 ChloraPrep™ Swabsticks, 3/Pack
- 1 Tegaderm™ Transparent Dressing, #1616



Item #	Description	UOM
IM46113	Dressing Change with ChloraPrep™ Swabs	30/Case

DRESSING CHANGE KIT WITH CHLORAPREP™ SWABS

ITEM #: IM46120

- 1 Pair of Gloves
- 1 Mask
- 1 Tape Strips
- 1 Towel
- 1 Tape Measure
- 1 Gauze, 2" x 2"
- 1 Gauze, 4" x 4"
- 1 Non-Adherent Gauze, 2" x 2"
- 1 Split Non-Woven Gauze, 2" x 2"
- 1 Cavilon™ Skin Prep Pad
- 1 Alcohol Swabsticks, 3/Pack
- 1 ChloraPrep™ Swabsticks, 3/Pack
- 1 Tegaderm™ Transparent Dressing, #1688



Item #	Description	UOM
IM46120	Dressing Change Kit with ChloraPrep™ Swabs	30/Case

ChloraPrep™ is a registered trademark of Becton Dickinson and Company or its affiliates.
Tegaderm™ and Cavilon™ are trademarks of 3M™ and is used under license.



DRESSING CHANGE KITS

DRESSING CHANGE KITS

DRESSING CHANGE KIT WITH GRIP-LOK™ & HALOGUARD™

ITEM #: IM46121

NEW IN 2025

- 1 Pair of Gloves
- 1 Mask
- 1 Roll of Tape
- 1 Towel
- 1 Tape Measure
- 2 Gauze, 4" x 4"
- 2 Alcohol Prep Pads
- 1 Alcohol Swabsticks, 3/Pack
- 1 ChloroPrep™, 3mL
- 1 Dressing Change Label
- 1 Grip-Lok™, #3300MWA
- 1 HALOGuard™, 1" with 4mm Insert
- 1 Tegaderm™ Transparent Dressing, #1616



Item #	Description	UOM
IM46121	Dressing Change Kit with Grip-Lok™ & HALOGuard	30/Case

DRESSING CHANGE KIT WITH GRIP-LOK™

ITEM #: IM46122

NEW IN 2025

- 1 Pair of Gloves
- 1 Mask
- 1 Roll of Tape
- 1 Towel
- 1 Tape Measure
- 1 Gauze, 4" x 4"
- 1 Non-Woven Split Gauze, 2" x 2"
- 1 Non-Adherent Gauze
- 2 Alcohol Prep Pads
- 1 Alcohol Swabsticks, 3/Pack
- 1 ChloroPrep™, 3mL
- 1 Grip-Lok™, #3300MWA
- 1 Tegaderm™ Transparent Dressing, #1616



Item #	Description	UOM
IM46122	Dressing Change Kit with Grip-Lok™	30/Case

Grip-Lok™ is a registered trademark of TIDI Products, LLC.
 HALOGuard™ is a trademark of ATTWILL Medical Solutions.
 ChloroPrep™ is a registered trademark of Becton Dickinson and Company or its affiliates.
 Tegaderm™ is a trademark of 3M™ and is used under license.



MISCELLANEOUS KIT MATRIX

	Spill		Convenience			
	IM1300A	IM46119	IMHYP1000	IMPA1213D	IM46116	IM46117
Gloves	2	2*	1	1		
Towel	2	1**		1		
Tape, Roll			1			
Adhesive Bandage					2	1
Sub-Q 2-Needle Safety Set			1			
Gauze, 2" x 2"				1		
Gauze, Split Non-Adherent				1		
Saline Syringes				3		
IV Flow Regulator			1			
ChloroPrep™, 3mL				1		
ChloroPrep™, Frepp™			1			
Alcohol Prep Pad			2		2	1
Antiseptic Towelette	1					
Chemo Waste Bag	1	1				
Poly-Coated ISO Gown	1					
Hypodermic Needle					1	
Hypodermic Syringe					2	
Pen Needle						1
Instructions for Use		1				
UOM	20/Case	30/Case	5/Case	20/Case	100/Case	100/Case

*Chemo-rated Gloves

**Ultra-sorb Pad



SPILL KITS

BIOHAZARD SPILL KIT

ITEM #: IM1300A

- 2 Pairs of Gloves
- 1 Chemo Waste Bag
- 1 Antiseptic Towelette
- 2 Absorbent Towels
- 1 Poly-Coated ISO Gown



Item #	Description	UOM
IM1300A	Biohazard Spill Kit	20/Case

CHEMOTHERAPY SPILL KIT - BASIC

ITEM #: IM46119

- 2 Chemo-rated Pairs of Gloves
- 1 Chemo Waste Bag
- 1 Antiseptic Towelette
- 1 Ultrasorbs Towel
- Instructions for Use (English/Spanish)



Item #	Description	UOM
IM46119	Chemotherapy Spill Kit, Basic	30/Case



CONVENIENCE KITS

HYPODERMOCLYSIS KIT

ITEM #: IMHYP1000

- 1 Pair of Gloves
- 1 Roll of Tape
- 2 Alcohol Prep Pads
- 1 IV Flow Regulator Set
- 2 Chloraprep™ Frepp™, 1.5mL
- 1 OPTFlow™ Sub-Q 2-Needle Safety Set, 26g x 9mm



Item #	Description	UOM
IMHYP1000	Hypodermoclysis Kit	5/Case

PORT ACCESS KIT WITH CHLORAPREP™

ITEM #: IMPA1213D

- 1 Pair of Gloves
- 1 Towel
- 1 Gauze, 2" x 2"
- 1 Split Non-Adherent Gauze, 2" x 2"
- 3 Prefilled Saline Syringes
- 1 Chloraprep™, 3mL



Item #	Description	UOM
IMPA1213D	Port Access Kit with Chloraprep™	20/Case

Chloraprep™ and FREPP™ are registered trademarks of Becton Dickinson and Company or its affiliates. OPTFlow™ is a registered trademark of EMED Technologies Corporation.



CONVENIENCE KITS

SUBCUTANEOUS DOSE KIT

ITEM #: IM46116

- 2 Alcohol Prep Pads
- 2 Adhesive Bandages, 1x3"
- 1 SurGuard® 3 Hypodermic Needle, 27g x 1/2"
- 2 SurGuard® 3 Hypodermic Syringe with Safety Needles:
 - 1mL, 27g x 1/2"
 - 3mL, 25g x 5/8"



Item #	Description	UOM
IM46116	Subcutaneous Dose Kit	30/Case

PEN NEEDLE KIT

- 30 Alcohol Prep Pads, Medium
- 30 Adhesive Bandages, 1x3"
- 30 Pen Needles



Item #	Description	UOM
IM46117	Pen Needle Kit, 31G x 8mm	100/Case
IM46118	Pen Needle Kit, 31G x 5mm	100/Case

SurGuard® is a registered trademark of Terumo Medical Corporation.



CLEO™ 90 INFUSION SET

The Advantages of the Cleo™ 90 Infusion Set are Clear

All-in-One Design

Preassembled, proprietary housing includes an introducer and cannula to make insertions simple and helping control speed.

Enclosed Needle

Safety

Needle protection device automatically retracts into the housing after insertion, reducing the risk of accidental needlestick injuries.

Hypoallergenic

Dressing

Small, transparent adhesive dressing is designed to breathe and stay in place with less tape. Proprietary release table makes removal easy.

Flex Attach™ 360°

Site tubing connection provides 360° on-site rotation to allow for greater flexibility.

Easy to Train

Inserted with a single motion, using one hand. Designed with a standard luer connection, Cleo™ can be used with any pump that has a luer fitting.



As easy as twist, insert, and connect -- your **all-in-one subcutaneous infusion set.**

Item #	Description	UOM
IM53080	Cleo™ SubQ Infusion Cannula, 6mm	50/Box
IM53081	Cleo™ SubQ Infusion Cannula, 9mm	50/Box
IM53082	Cleo™ SubQ Infusion Set Tubing, 24"	50/Box
IM53083	Cleo™ SubQ Infusion Set Tubing, 31"	50/Box
IM53084	Cleo™ SubQ Infusion Set Tubing, 42"	50/Box

Source: ICU Medical, 2024
Cleo™ and Flex Attach™ are trademarks of ICU Medical.



IV ADMINISTRATION SETS

GRAVITY SETS

- 96" Length
- Not Made with Natural Rubber Latex
- DEHP-Free
- Universal Vented/Non-Vented Spike
- Rotating Luer
- Y-Injection Site
- Roller Clamp
- Drip Chamber

IM42072

Item #	Description	Details	UOM
IM42071	IV Administration Set	10 Drops/mL	50/Case
IM42072	IV Administration Set	15 Drops/mL	50/Case
IM42073	IV Administration Set	20 Drops/mL	50/Case
IM42070	IV Administration Set, 0.22 Micron Filter	20 Drops/mL	50/Case

IV ADMINISTRATION SET WITH FLOW REGULATOR

- 92" Length
- Not Made with Natural Rubber Latex
- DEHP-Free
- Universal Vented/Non-Vented Spike
- GVS EasyDrop Flow Regulator (5-250mL)
- 15 Micron Filter (within drip chamber)
- Y-Injection Site
- Pinch Clamp
- Needle-Free and 0.22 Micron Filter Options Available

IM42074



Item #	Description	Details	UOM
IM42031	IV Administration Set with Flow Regulator		50/Case
IM42069	IV Administration Set with Flow Regulator	.22 Micron Filter	50/Case
IM42074	IV Administration Set with Flow Regulator	GVS EasyDrop (5-300mL)	50/Case
IM42076	IV Administration Set with Flow Regulator	Needle-Free	50/Case



IV ADMINISTRATION SETS

SECONDARY IV ADMINISTRATION SET

- Not Made with Natural Rubber Latex
- DEHP-Free
- Universal Vented/Non-Vented Spike
- Rotating Male Luer
- Roller Clamp
- Drip Chamber
- Hanger

IM42075

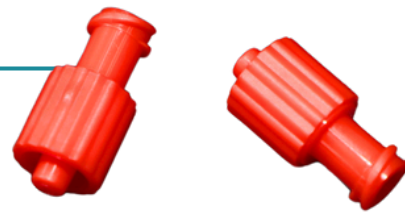


Item #	Description	Details	UOM
IM42075	Secondary IV Administration Set	Secondary	50/Box

DUAL-FUNCTION DEAD END CAPS

- Not Made with Natural Rubber Latex
- DEHP-Free
- PVC-Free
- BPA-Free
- Sterile-Packed
- Male/Female Luer
- Meets ISO 80369 Standard

IM51003



Item #	Description	Details	UOM
IM51003	Sterile End Cap	Red	100/Case



EXTENSION SETS

EXTENSION SETS

SMALLBORE EXTENSION SET

- Not Made with Natural Rubber Latex
- DEHP-Free
- Male/Female Luer
- Pinch Clamp

IM41002

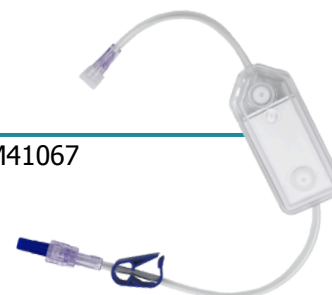


Item #	Description	Size	UOM
IM41000	Smallbore Extension Set	7"	50/Case
IM41001	Smallbore Extension Set	12"	50/Case
IM41002	Smallbore Extension Set	15"	50/Case

EXTENSION SET WITH MICRON FILTER

- Not Made with Natural Rubber Latex
- DEHP-Free
- Male/Female Luer
- Pinch Clamp
- Micron Filter

IM41067



Item #	Description	Size	UOM
IM41067	Extension Set with .22 Micron Filter	12"	50/Case
IM41068	Extension Set with 1.2 Micron Filter	12"	50/Case

EXTENSION SET WITH FLOW REGULATOR

- Not Made with Natural Rubber Latex
- DEHP-Free
- Length: 19"
- Priming Volume: 3.1mL
- Male/Female Luer
- Y-Injection Site
- Flow Regulator (5-250mL)

IM41018



Item #	Description	UOM
IM41018	Extension Set with Flow Regulator	50/Case



EVA GRAVITY BAGS

2-PORT EVA BAG

- Not Made with Natural Rubber Latex
- DEHP-Free
- PVC Ports
- Ethyl Vinyl Acetate (EVA)
- Durable & Transparent

IM68050

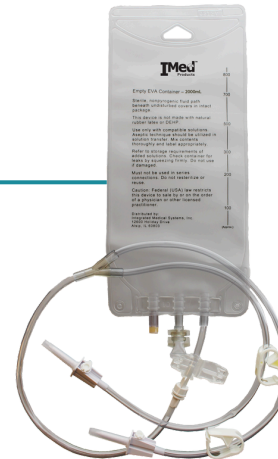


Item #	Description	Size	UOM
IM68040	EVA Bag, 2-Port	150mL	50/Case
IM68045	EVA Bag, 2-Port	250mL	50/Case
IM68050	EVA Bag, 2-Port	500mL	50/Case
IM68055	EVA Bag, 2-Port	1000mL	50/Case

2 OR 3 LEG EVA BAG

- Not Made with Natural Rubber Latex
- DEHP-Free
- PVC Ports & Tubing
- Ethyl Vinyl Acetate (EVA)
- Detachable Transfer Sets
- 2 Leg or 3 Leg Options
- Vented Spikes
- Leg Closing Cap

IM68125



Item #	Description	Size	UOM
IM68102	EVA Bag, 2 Legs	500mL	50/Case
IM68100	EVA Bag, 2 Legs	1000mL	50/Case
IM68105	EVA Bag, 2 Legs	2000mL	50/Case
IM68110	EVA Bag, 2 Legs	3000mL	50/Case
IM68120	EVA Bag, 3 Legs	1000mL	50/Case
IM68125	EVA Bag, 3 Legs	2000mL	50/Case
IM68130	EVA Bag, 3 Legs	3000mL	50/Case
IM68135	EVA Bag, 3 Legs	4000mL	50/Case



BANDAGES & DRESSINGS

COHESIVE BANDAGES

- Self-Adherent
- Easy Tear
- Slip-Resistant
- Secures IVs and Other Devices

IM36086



Item #	Description	Size	UOM
IM36085	Tan Cohesive Bandages	2" x 5 Yards	36/Box
IM36086	Assorted Color Cohesive Bandages	2" x 5 Yards	36/Box
IM36087	Tan Cohesive Bandages	3" x 5 Yards	24/Box
IM36088	Assorted Color Cohesive Bandages	3" x 5 Yards	24/Box

UPDATE COMING 2025

ELASTIC NET RETAINER DRESSINGS

- Not Made with Natural Rubber Latex
- Easily Forms to Body
- Reusable (Per Person)

IMS06



Item #	Description	Size	UOM
IMS03	Elastic Net Retainer Dressing	Small Hand	1 Roll/Box
IMS04	Elastic Net Retainer Dressing	Medium Hand	1 Roll/Box
IMS05	Elastic Net Retainer Dressing	Small Arm	1 Roll/Box
IMS06	Elastic Net Retainer Dressing	Medium Arm	1 Roll/Box
IMS07	Elastic Net Retainer Dressing	Large Arm	1 Roll/Box
IMS08	Elastic Net Retainer Dressing	Extra Large Arm	1 Roll/Box
IMS09	Elastic Net Retainer Dressing	Head/Abdomen	1 Roll/Box



BANDAGES & DRESSINGS

IMED GUARD

Premier Wound Guard to Promote Rapid Healing

Antimicrobial

Disposable discs are infused with antimicrobial agent, chlorhexidine gluconate (CHG), to reduce contamination by inhibiting microbial growth and colonization.

High Absorbency

The IMed Guard contains foam that has a 38% higher absorbency rating than the market-leading product.

Beveled Edges

The beveled edges and side cut on the disc allow for easy tube securement while reducing potential for catheter kinking.

Hypoallergenic

This disc is pyrogen-free, not made from natural latex, and has undergone testing for safety and effectiveness.



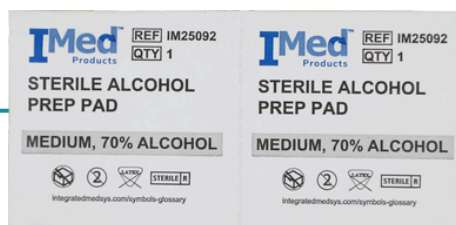
IM36026

Item #	Description	Size	UOM
IM36026	IMed Guard with CHG	1 inch circle, 4mm hole	10/Box

ALCOHOL PREP PADS

- Contains 70% Isopropyl Alcohol
- Sterile
- 2-Ply
- Non-Woven

IM25092



Item #	Description	Size	UOM
IM25092	Sterile Alcohol Prep Pads	Medium	20 Boxes/200; 4000/Case
IM25093	Sterile Alcohol Prep Pads	Large	40 Boxes/100; 4000/Case

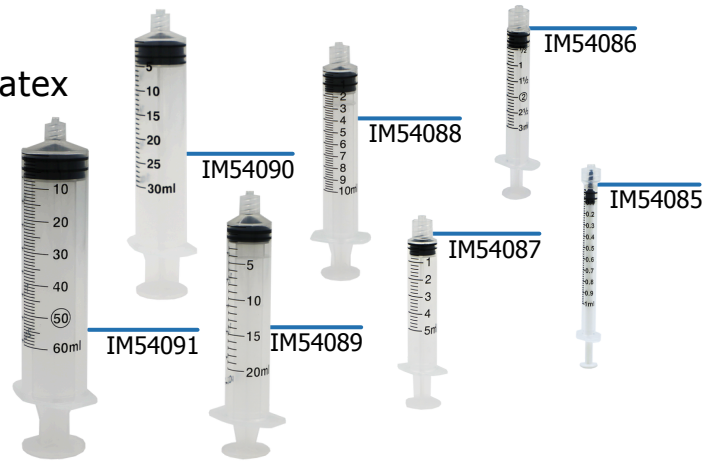


EMPTY SYRINGES

EMPTY SYRINGES

EMPTY SYRINGES

- Not Made with Natural Rubber Latex
- Sterile
- Individually-Packaged
- Easy-to-Read Numbering
- Transparent Barrel



Item #	Description	Size	UOM
IM54085	Empty Syringe with Luer Lock	1mL	100/Box
IM54086	Empty Syringe with Luer Lock	3mL	100/Box
IM54087	Empty Syringe with Luer Lock	5mL	100/Box
IM54088	Empty Syringe with Luer Lock	10mL	100/Box
IM54089	Empty Syringe with Luer Lock	20mL	50/Box
IM54090	Empty Syringe with Luer Lock	30mL	50/Box
IM54091	Empty Syringe with Luer Lock	60mL	50/Box

ENFit® SYRINGES

- Not Made with Natural Rubber Latex
- Sterile
- Individually-Packaged
- Easy-to-Read Numbering
- Purple Barrel



Item #	Description	Size	UOM
IM54092	ENFit® Syringe	5mL	50/Box
IM54093	ENFit® Syringe	10mL	50/Box
IM54094	ENFit® Syringe	20mL	50/Box
IM54095	ENFit® Syringe	35mL	50/Box
IM54096	ENFit® Syringe	60mL	50/Box
IM54097	ENFit® Syringe with Thumb Ring	60mL	50/Box

ENFit® is a registered mark for ISO 80369-3 Enteral Connector Standard.



integratedmedsys.com | 800.755.3800



DISINFECTANTS

70% ISOPROPYL ALCOHOL (IPA)

- Sterile
- USP-Grade Isopropanol (Isopropyl Alcohol)
- 70% Alcohol by Volume
- 30% USP-Purified Water
- Double-Bagged
- Gamma-Irradiated



Item #	Description	Attribute	Size	UOM
IM27094	70% Isopropyl Alcohol	Flip-Top Bottle	16oz	12/Case
IM27077	70% Isopropyl Alcohol	Spray	16oz	12/Case
IM27078	70% Isopropyl Alcohol	Spray	32oz	12/Case
IM27079	70% Isopropyl Alcohol	Bottle	Gallon	4/Case



BACKPACKS & POUCHES

DURABLE BACKPACKS

- Use with CADD, Curlin, and Sapphire Pumps
- Adjustable Straps
- Available in Blue

IM58008U



Item #	Description	Size	UOM
IM58021	Ambulatory Pump Backpack	2000mL	1/Each
IM58008U	Ambulatory Pump Backpack	3000mL	1/Each

ENTERAL BACKPACKS

- Use with Infinity, Omni, and Joey Pumps
- Adjustable Straps
- Available in Blue

IM58009U



Item #	Description	Size	UOM
IM58020	Enteral Pump Backpack	500mL	1 Each
IM58009U	Enteral Pump Backpack	1200mL	1 Each



BACKPACKS & POUCHES

DURABLE POUCHES

- Use with CADD, Curlin, and Sapphire Pumps
- Adjustable Shoulder Strap
- Available in Blue

IM58006U



Item #	Description	Size	UOM
IM58005U	Ambulatory Pump Pouch	100mL	1/Each
IM58019	Fanny Pump Pouch	500mL	1/Each
IM58006U	Ambulatory Pump Pouch	500mL	1/Each
IM58007U	Ambulatory Pump Pouch	1000mL	1/Each

EZ-FLOW™ ELASTOMERIC PUMP POUCHES

- Use with Elastomeric Pumps
- Adjustable Straps
- Zipper Pouch
- Available in Blue

IM58010



Item #	Description	Size	UOM
IM58010	Elastomeric Pump Pouch	200mL	1/Each
IM58011	Elastomeric Pump Pouch	500mL	1/Each



Backpacks & Pouches

IM58005U	Ambulatory Pump Pouch, 100mL	35
IM58006U	Ambulatory Pump Pouch, 500mL	35
IM58007U	Ambulatory Pump Pouch, 1000mL	35
IM58008U	Ambulatory Pump Backpack, 3000mL	34
IM58009U	Enteral Pump Backpack, 1200mL	34
IM58010	Elastomeric Pump Pouch, 200mL	35
IM58011	Elastomeric Pump Pouch, 500mL	35
IM58019	Fanny Pump Pouch, 500mL	35
IM58020	Enteral Pump Backpack, 500mL	34
IM58021	Ambulatory Pump Backpack, 2000mL	34

Bandages & Dressings

IM25092	Sterile Alcohol Prep Pads, Medium	31
IM25093	Sterile Alcohol Prep Pads, Large	31
IM36026	IMed Guard with CHG	31
IM36085	Tan Cohesive Bandages, 2" x 5 Yards	30
IM36086	Color Cohesive Bandages, 2" x 5 Yards	30
IM36087	Tan Cohesive Bandages, 3" x 5 Yards	30
IM36088	Color Cohesive Bandages, 3" x 5 Yards	30
IMS03	Elastic Net, Small Hand	30
IMS04	Elastic Net, Medium Hand	30
IMS05	Elastic Net, Small Arm	30
IMS06	Elastic Net, Medium Arm	30
IMS07	Elastic Net, Large Arm	30
IMS08	Elastic Net, Extra Large Arm	30
IMS09	Elastic Net, Head/Abdomen	30

Disinfectants

IM27077	70% Isopropyl Alcohol, 16oz	33
IM27078	70% Isopropyl Alcohol, 32oz	33
IM27079	70% Isopropyl Alcohol, Gallon	33
IM27094	70% Isopropyl Alcohol, Flip Top, 16oz	33

Elastomeric Pumps

Chemotherapy

IM100002C	100mL/2mL Hr	7
IM125005C	125mL/5mL Hr	7
IM270002C	270mL/2mL Hr	7
IM270005C	270mL/5mL Hr	7
IM270010C	270mL/10mL Hr	7
IM300006C	300mL/6mL Hr	7

Long Duration

IM060005L	60mL/5mL Hr	6
IM100002L	100mL/2mL Hr	6
IM100005L	100mL/5mL Hr	6
IM125005L	125mL/5mL Hr	6
IM270001L	270mL/1mL Hr	6
IM270002L	270mL/2mL Hr	6
IM270004L	270mL/4mL Hr	6
IM270005L	270mL/5mL Hr	6
IM270010L	270mL/10mL Hr	6
IM500020L	500mL/20mL Hr	6

Elastomeric Pumps (cont.)

Short Duration

IM050050S	50mL/50mL Hr	5
IM100050S	100mL/50mL Hr	5
IM100100S	100mL/100mL Hr	5
IM100200S	100mL/200mL Hr	5
IM200100S	200mL/100mL Hr	5
IM200200S	200mL/200mL Hr	5
IM250050S	250mL/50mL Hr	5
IM250100S	250mL/100mL Hr	5
IM250125S	250mL/125mL Hr	5
IM250175S	250mL/175mL Hr	5
IM250250S	250mL/250mL Hr	5
IM250500S	250mL/500mL Hr	5
IM270175S	270mL/175mL Hr	5
IM400100S	400mL/100mL Hr	5
IM400200S	400mL/200mL Hr	5
IM500250S	500mL/250mL Hr	5

EVA Gravity Bags

IM68040	2-Port EVA Bag, 150mL	29
IM68045	2-Port EVA Bag, 250mL	29
IM68050	2-Port EVA Bag, 500mL	29
IM68055	2-Port EVA Bag, 1000mL	29
IM68100	2 Leg EVA Bag, 1000mL	29
IM68102	2 Leg EVA Bag, 500mL	29
IM68105	2 Leg EVA Bag, 2000mL	29
IM68110	2 Leg EVA Bag, 3000mL	29
IM68120	3 Leg EVA Bag, 1000mL	29
IM68125	3 Leg EVA Bag, 2000mL	29
IM68130	3 Leg EVA Bag, 3000mL	29
IM68135	3 Leg EVA Bag, 4000mL	29

Extension Sets

IM41000	Smallbore Extension Set, 7"	28
IM41001	Smallbore Extension Set, 12"	28
IM41002	Smallbore Extension Set, 15"	28
IM41018	Extension Set with Flow Regulator	28
IM41067	Extension Set with .22 Micron Filter	28
IM41068	Extension Set with 1.2 Micron Filter	28



INDEX

IMed Kits

Dressing Change Kits

IM1210	...with PVP Swabs	14
IM1211	...with ChloroPrep™ Swabs	14
IM1212	...with ChloroPrep™ 3mL	15
IM1219	...with CHG Dressing	15
IM1222	...with ChloroPrep™ 3mL	16
IM1250	...with ChloroPrep™ Swabs	16
IM46023	...with Statlock™	17
IM46032-C	...with ChloroPrep™	17
IM46061	...with Statlock™ & HALOGuard™	18
IM46062	...with ChloroPrep™ 3 mL & HALOGuard™	18
IM46113	...with ChloroPrep™ Swabs	19
IM46120	...with ChloroPrep™ Swabs	19
IM46121	...with Grip-Lok™ & HALOGuard™	20
IM46122	...with Grip-Lok™	20

IV Start Kits

IM1200C	...with Preventions™	10
IM1205C	...with Chloraprep™ FREPP™	10
IM1207C	...with ChloroPrep™ 1mL	10
IM1252	...with PVP Prep Pad	11
IM2201	...with ChloroPrep™ 1mL	11

Miscellaneous Kits

IM1300A	Biohazard Spill Kit	22
IM46116	Subcutaneous Dose Kit	24
IM46117	Pen Needle Kit	24
IM46119	Chemotherapy Spill Kit, Basic	22
IM53080	Cleo™ SubQ Infusion Cannula, 6mm	25
IM53081	Cleo™ SubQ Infusion Cannula, 9mm	25
IM53082	Cleo™ SubQ Infusion Set Tubing, 24"	25
IM53083	Cleo™ SubQ Infusion Set Tubing, 31"	25
IM53084	Cleo™ SubQ Infusion Set Tubing, 42"	25
IMHYP1000	Hypodermoclysis Kit	23
IMPA1213D	Port Access Kit with ChloroPrep™	23

IV Administration Sets

IM42031	IV Admin Set with Flow Regulator	26
IM42069	IV Admin Set with Flow Regulator & Filter	26
IM42070	IV Admin Set with .22 Micron In Line Filter	26
IM42071	IV Admin Set, 10 Drops/mL	26
IM42072	IV Admin Set, 15 Drops/mL	26
IM42073	IV Admin Set, 20 Drops/mL	26
IM42074	IV Admin Set with Flow Regulator	26
IM42076	Needle-Free with Flow Regulator	26
IM42075	Secondary IV Admin Set	27
IM51003	Sterile End Cap, Red	27

Syringes

IM54085	...with Luer Lock, 1mL	32
IM54086	...with Luer Lock, 3mL	32
IM54087	...with Luer Lock, 5mL	32
IM54088	...with Luer Lock, 10mL	32
IM54089	...with Luer Lock, 20mL	32
IM54090	...with Luer Lock, 30mL	32
IM54091	...with Luer Lock, 60mL	32
IM54092	ENFit® Syringe, 5mL	32
IM54093	ENFit® Syringe, 10mL	32
IM54094	ENFit® Syringe, 20mL	32
IM54095	ENFit® Syringe, 35mL	32
IM54096	ENFit® Syringe, 60mL	32
IM54097	ENFit® Syringe with Thumb Ring, 60mL	32



INTEGRATEDMEDSYS.COM

WHERE PERSONALIZATION MEETS EXCELLENCE

Create an account at integratedmedsys.com for a personalized and convenient experience with access to all the information and functionality you need in one place.

- Enhanced Post-Login Experience
- Scheduled Order Functionality
- PayNOW
- Order History

Ready to take action?

Scan the QR code to place your order or find out more!



Leading the healthcare industry towards a more efficient and effective future through our commitment to excellence in developing cutting-edge medical products and solutions.



The product details provided herein, including any images or supplements, reflect information from various sources regarding the product; this information has not been independently verified by Integrated Medical Systems ("IMS") or its affiliates. IMS is not liable for any inaccuracies or omissions in the product information, which is provided solely for your convenience.

The information presented here is subject to change without prior notice. Customers should review product packaging and labeling before use or purchase to ensure accuracy, especially when referencing information from IMS's online or printed materials. IMS disclaims any responsibility for the accuracy or completeness of the information reflected herein, regardless of whether any inaccuracies or omissions are due to errors or other factors.