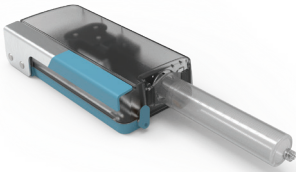


INSIGNIS™ SYRINGE DRIVER

- 13.5psi constant pressure mechanical syringe driver

Part #
D10021



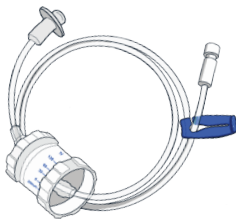
SYRINGE DRIVER CARRYING CASE
(Included with Syringe Driver)



INTRAVENOUS CONTROLLER (box of 10)

- Set any flow rate from 30ml/hr-250ml/hr.

Part #
C10031



INSIGNIS-26G™ SUBCUTANEOUS NEEDLE SETS 26 Gauge Needle Sets (box of 10)

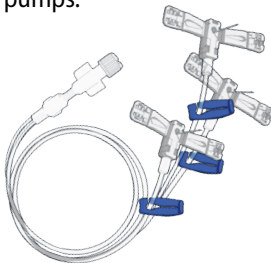
- State-of-the-art 26G needle sets replace 24G-27G needles with flow rates comparable to 24G.
- Generic luer attaches to mechanical/electronic infusion pumps.

Single Needle Set

| Length | Part # |
|--------|------------|
| 6mm | SC-NS-0106 |
| 9mm | SC-NS-0109 |
| 12mm | SC-NS-0112 |
| 14mm | SC-NS-0114 |

Two-Needle Set

| Length | Part # |
|--------|------------|
| 6mm | SC-NS-0206 |
| 9mm | SC-NS-0209 |
| 12mm | SC-NS-0212 |
| 14mm | SC-NS-0214 |



Three-Needle Set

| Length | Part # |
|--------|------------|
| 6mm | SC-NS-0306 |
| 9mm | SC-NS-0309 |
| 12mm | SC-NS-0312 |
| 14mm | SC-NS-0314 |

Four-Needle Set

| Length | Part # |
|--------|------------|
| 6mm | SC-NS-0406 |
| 9mm | SC-NS-0409 |
| 12mm | SC-NS-0412 |
| 14mm | SC-NS-0414 |

ONESET™ SUBCUTANEOUS ADMINISTRATION SET (box of 10)

- Flow rate device is attached directly to 26G subcutaneous needle set (reduces risk of contamination).
- Dedicated, accurately calibrated selectable rate flow controller 10ml/hr/site-60ml/hr/site (accommodates 20% IgG).
- Enables titration and modification of flow rates in real-time, during infusion.

Single Needle Set

| Length | Part # |
|--------|---------|
| 6mm | OS-0106 |
| 9mm | OS-0109 |
| 12mm | OS-0112 |
| 14mm | OS-0114 |

Two-Needle Set

| Length | Part # |
|--------|---------|
| 6mm | OS-0206 |
| 9mm | OS-0209 |
| 12mm | OS-0212 |
| 14mm | OS-0214 |

Three-Needle Set

| Length | Part # |
|--------|---------|
| 6mm | OS-0306 |
| 9mm | OS-0309 |
| 12mm | OS-0312 |
| 14mm | OS-0314 |

Four-Needle Set

| Length | Part # |
|--------|---------|
| 6mm | OS-0406 |
| 9mm | OS-0409 |
| 12mm | OS-0412 |
| 14mm | OS-0414 |

