

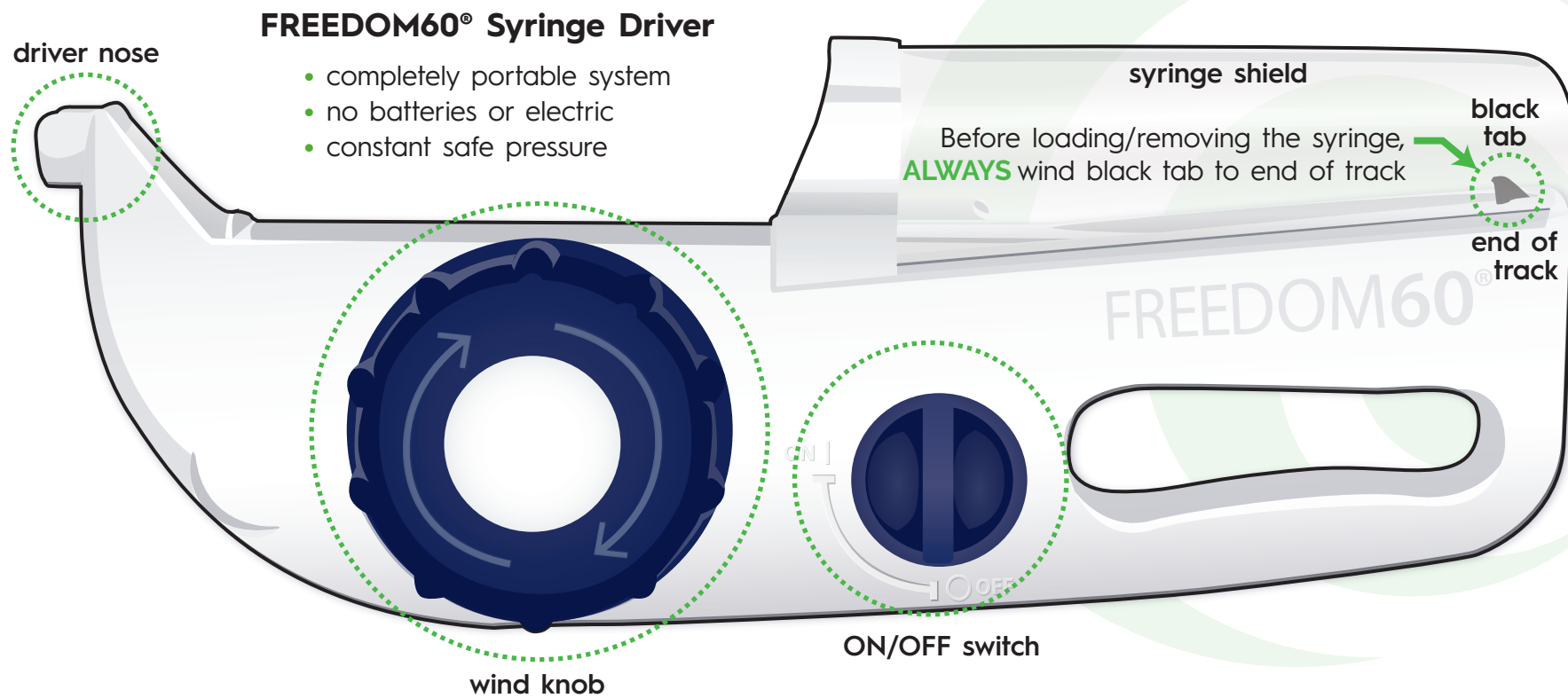
# FREEDOM60<sup>®</sup> Antibiotic Infusion Mat

## Syringe Infusion System

With safety in the forefront, KORU's syringe infusion systems give patients the freedom to infuse antibiotics in the comfort of their own home or on the go. The FREEDOM60 satisfies both subq and IV needs and fits almost any dose in BD<sup>®</sup> 50 ml syringes, making IV antibiotic infusion easier than ever for both patients and providers.

### Gather Supplies:

Wipe down reusable infusion mat with alcohol pad prior to each use.

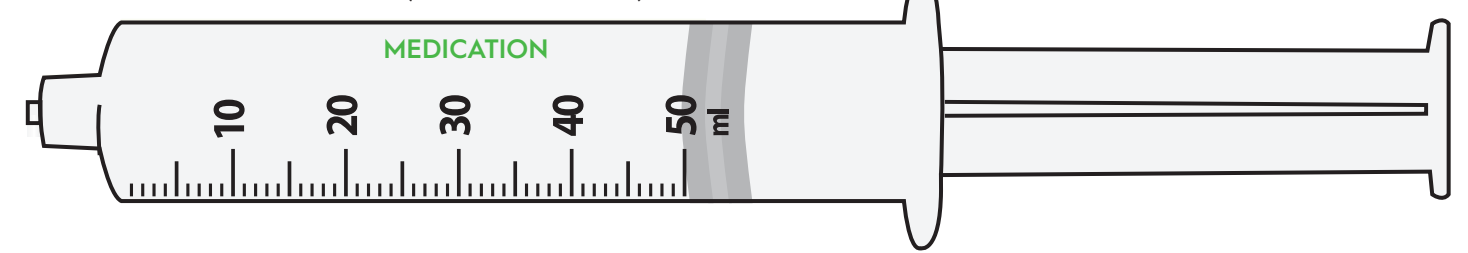


### FREEDOM60<sup>®</sup> Syringe Driver

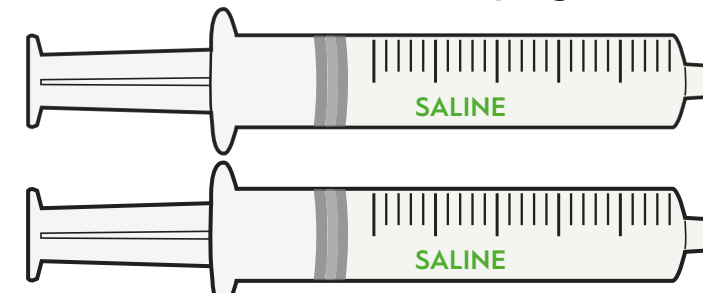
- completely portable system
- no batteries or electric
- constant safe pressure

### Filled Medication BD<sup>®</sup> 50 ml Syringe(s)

(Reference #309653)



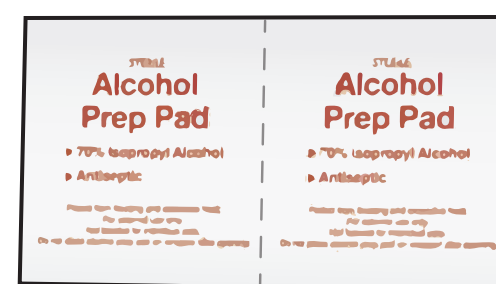
### Prefilled Saline Flush Syringes



### Prefilled Heparin Flush Syringe (if needed)



### Alcohol/Chlorhexidine Pads

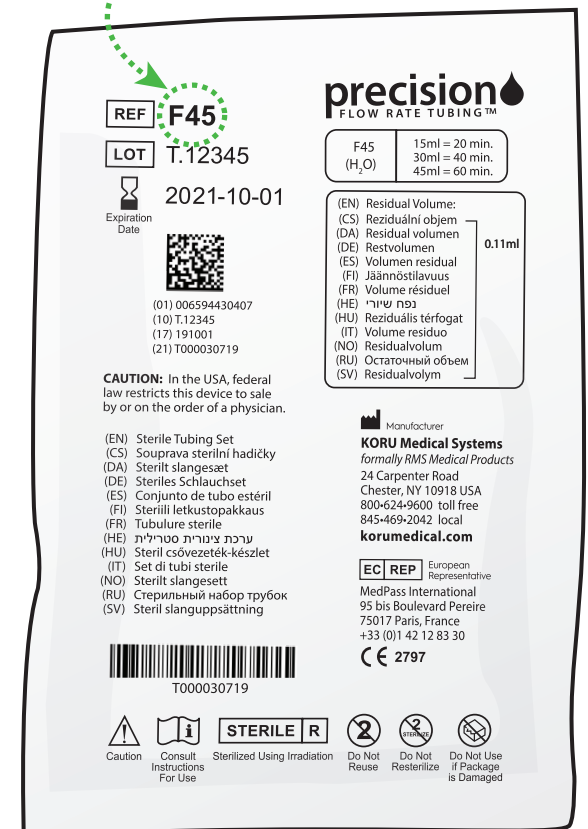


### Tubing Protection Caps



### Precision Flow Rate Tubing<sup>™</sup>

(verify the F number of the tubing)



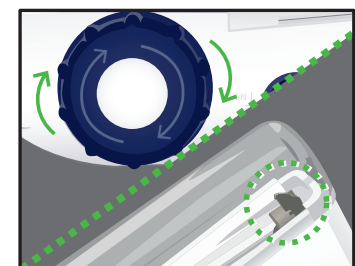
### Prepare the FREEDOM60:

#### 1 Wash Hands



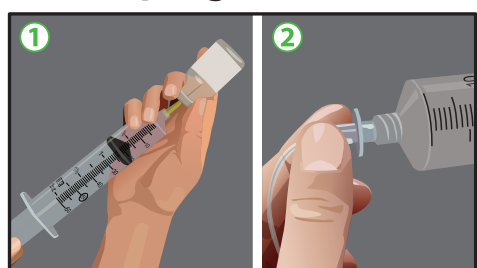
Wash your hands thoroughly and, if required, put on disposable gloves.

#### 2 Wind Back



end of its track. If the black tab is not at the end of its track, wind the large knob clockwise.

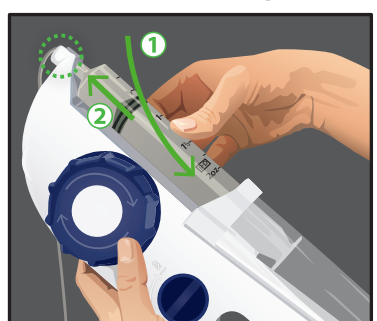
#### 3 Fill Syringe



Verify that you are using the correct Precision tubing set recommended and/or prescribed by your healthcare provider.

1. Fill the syringe(s) with your required dose. Refer to the drug manufacturer's instructions or ask your healthcare provider for detailed filling instructions.
2. Remove sterile cap from luer disc end of the Precision tubing set and connect to the syringe.

#### 4 Insert Syringe



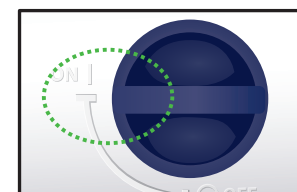
1. load the syringe and its tubing into the syringe driver.
2. Make sure the luer disc is fully seated in the driver's nose.

**NOTE:** You should not need to use significant force to load or remove the syringe. If you are having trouble, stop and make sure the black tab is at the end of its track.

### Prime Tubing:

Always follow your healthcare provider's protocol. Priming can be done by hand or by using the syringe driver. If using the FREEDOM60 to prime:

#### 5 Turn ON



Turn the syringe driver's ON/OFF switch to the ON position.

#### 6 Loosen Cap



Loosen the cap on the Precision tubing set.

#### 7 Watch for Drip & Tighten Cap



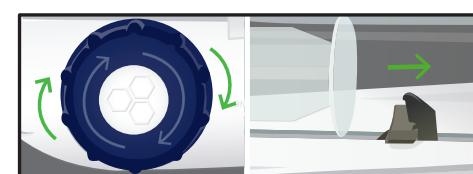
When medication starts to drip, tighten the cap on the Precision tubing set.

#### 8 Turn OFF



Turn the syringe driver's ON/OFF switch to the OFF position.

#### 9 Wind Back



Wind the large knob until the black tab is at the end of its track.

### Flush:

Always follow your healthcare provider's protocol.

#### 10 Use SASH Technique

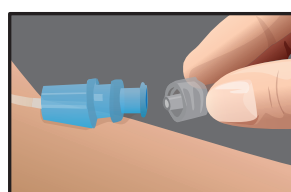
- S** Saline Flush  
Ensure patency of the line and clear the line of residual medication
- A** Administer  
Administer the medication (follow **Infuse Dose** steps 11 - 13)
- S** Saline Flush  
Ensure patency of the line and clear the line of residual medication
- H** Heparin  
Minimize the potential of a blood clot forming inside the central line lumen

- Cleanse needleless connector with alcohol - 15 second scrub and allow to air dry.
- Aspirate for blood return to ensure line patency before each access.

**References:** Hadaway L. Technology of flushing vascular access devices. Journal of Infusion Nursing. 29(3):129-145, May 2006.

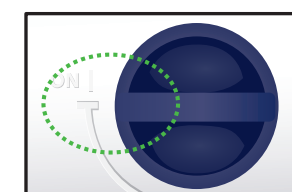
### Infuse Dose:

#### 11 Connect



Uncap the Precision tubing set. Turning clockwise, connect the Precision tubing to the catheter end or needle-free connector.

#### 12 Turn ON



Check that all clamps are open. Turn the ON/OFF switch to the ON position to begin the infusion.

#### 13 Check Infusion



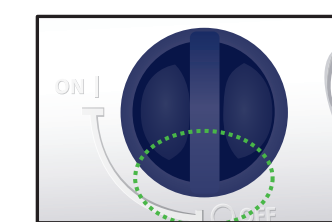
Periodically check that the syringe driver is working properly by seeing that the syringe plunger is moving.

**If using multiple syringes:** Once the first syringe is empty, turn the syringe driver OFF and wind the black tab to the end of its track. Remove the syringe and connect additional syringe to the luer disc end of the Precision tubing set. Turn the syringe driver ON to continue infusion.

### End of Infusion:

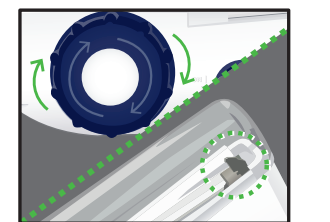
When syringe is completely empty.

#### 14 Turn OFF



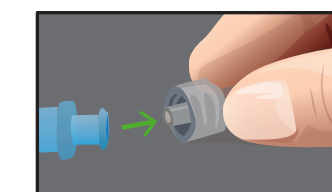
If needed, close clamp on the catheter. Turn the syringe driver's ON/OFF switch to the OFF position.

#### 15 Wind Back



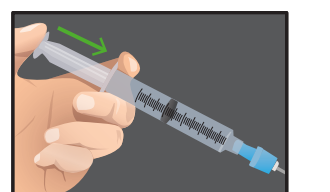
Wind the large knob until the black tab is at the end of its track.

#### 16 Detach Tubing



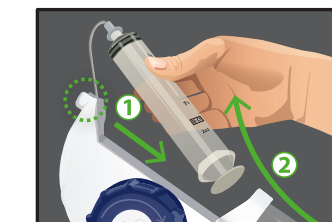
Disconnect Precision tubing set from catheter or needle-free connector.

#### 17 Flush



Refer to **Step 10** for the SASH technique and follow your healthcare provider's instructions.

#### 18 Detach Tubing



1. Pull syringe away from the syringe driver's nose and,
2. remove syringe from the syringe driver. Discard any biologics as required.

KORU is a Proud Sponsor of the Immune Deficiency Foundation and GBS/CIDP Foundation International

The FREEDOM60<sup>®</sup> and FreedomEdge<sup>®</sup> Syringe Infusion Systems and Precision Flow Rate Tubing<sup>™</sup> are trademarks of KORU Medical Systems and are compliant with Medical Device Directive 93/42/EEC. KORU Medical Systems is ISO 13485 certified. ©2020 KORU Medical Systems. All Rights Reserved. Freedom\_ABXInfusionMat\_03-1111vF

facebook.com/korumedical  
instagram.com/korumedical  
twitter.com/korumedical  
bit.ly/koruids  
Connections Blog:  
korumedical.tumblr.com

**KORU**  
MEDICAL SYSTEMS

845-469-2042 | korumedical.com



# FreedomEdge® Antibiotic Infusion Mat

Syringe Infusion System

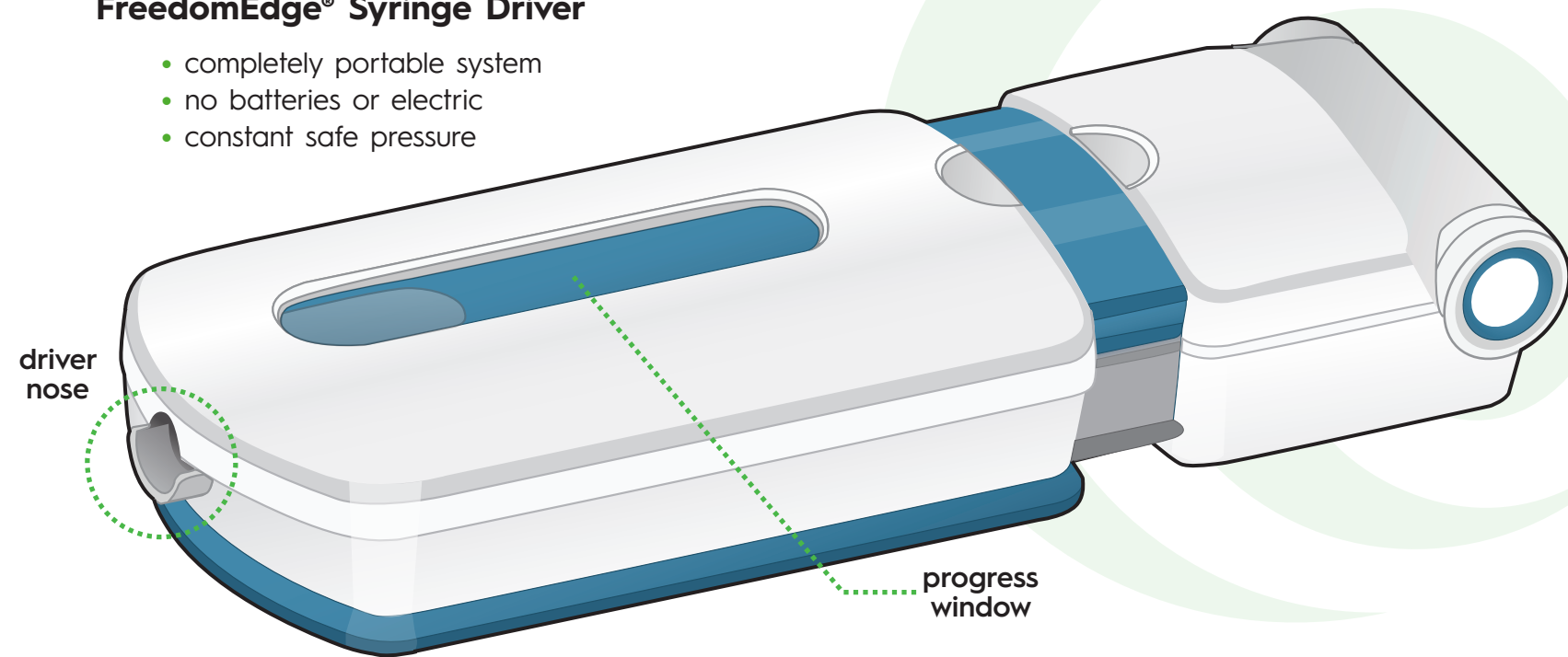
With safety in the forefront, KORU's syringe infusion systems give patients the freedom to infuse antibiotics in the comfort of their own home or on the go. The FreedomEdge satisfies both subq and IV needs and fits almost any dose in BD® 20 and 30 ml syringes, making IV antibiotic infusion easier than ever for both patients and providers.

## Gather Supplies:

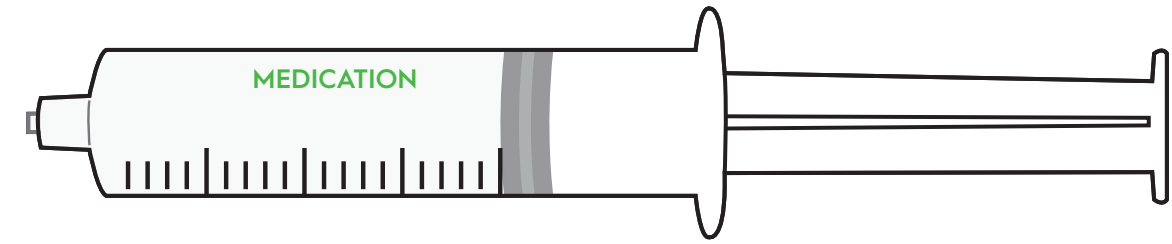
Wipe down reusable infusion mat with alcohol pad prior to each use.

### FreedomEdge® Syringe Driver

- completely portable system
- no batteries or electric
- constant safe pressure



Filled medication syringe(s) - BD® 20 ml or 30 ml  
(20 ml Reference #309653, 30 ml Reference #309653)



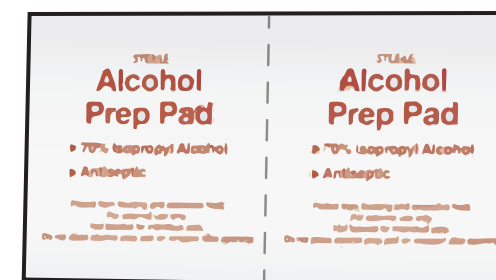
### Prefilled Saline Flush Syringes



### Prefilled Heparin Flush Syringe (if needed)



### Alcohol/Chlorhexidine Pads

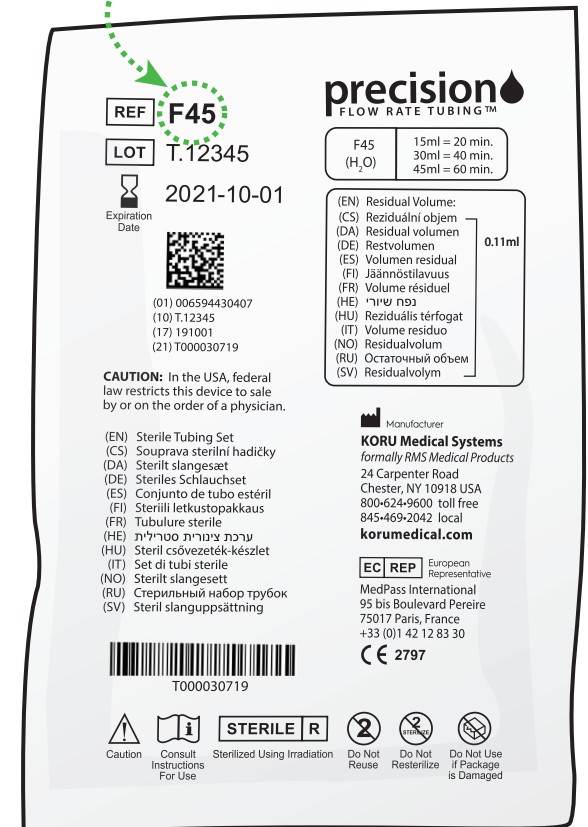


### Tubing Protection Caps



### Precision Flow Rate Tubing™

(verify the F number of the tubing)



## Prepare FreedomEdge and Prime Tubing:

### 1 Wash Hands



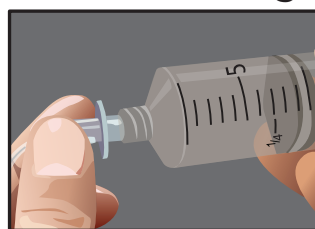
Wash your hands thoroughly and, if required, put on disposable gloves.

### 2 Fill Syringe



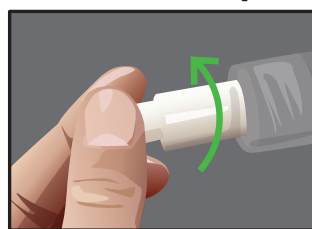
Fill the BD® 20 or 30 ml syringe(s) with your required dose. Refer to the drug manufacturer's instructions or ask your healthcare provider for detailed filling instructions.

### 3 Attach Tubing



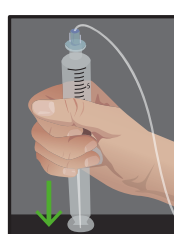
Verify that you are using the correct Precision tubing set recommended and/or prescribed by your healthcare provider. Remove sterile cap from luer disc end of the Precision tubing set and connect to the syringe.

### 4 Loosen Cap



Loosen the cap on the Precision tubing set.

### 5 Push Plunger



Grasp the syringe, and gently press down with steady pressure.

### 6 Watch for Drip & Tighten Cap



When medication starts to drip, tighten the cap on the Precision tubing set.

## Flush:

Always follow your healthcare provider's protocol.

### 7 Use SASH Technique

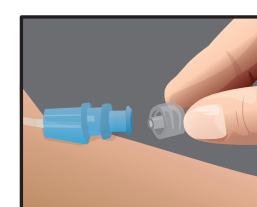
- S** **Saline Flush**  
Ensure patency of the line and clear the line of residual medication
- A** **Administer**  
Administer the medication (follow **Infuse Dose** steps 8 - 11)
- S** **Saline Flush**  
Ensure patency of the line and clear the line of residual medication
- H** **Heparin**  
Minimize the potential of a blood clot forming inside the central line lumen

- Cleanse needleless connector with alcohol - 15 second scrub and allow to air dry.
- Aspirate for blood return to ensure line patency before each access.

References: Hadaway L. Technology of flushing vascular access devices. Journal of Infusion Nursing. 29(3):129-145, May 2006.

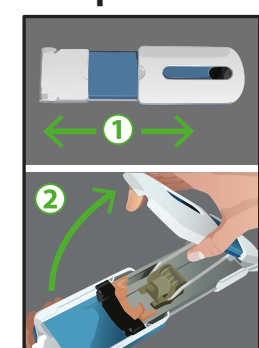
## Infuse Dose:

### 8 Connect



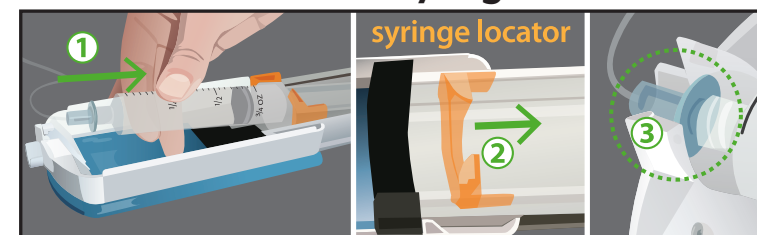
Uncap the Precision tubing set. Turning clockwise, connect the Precision tubing to the catheter end or needle-free connector.

### 9 Open FreedomEdge



1. To open, confirm that the FreedomEdge is fully extended.
2. Then, open the syringe driver fully by lifting the top cover.

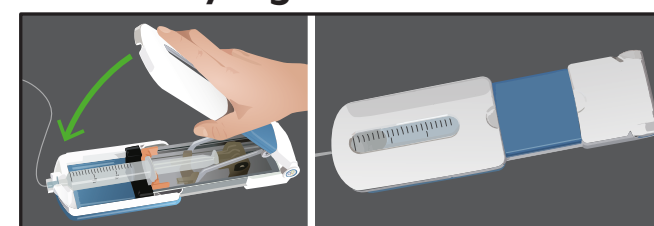
## 10 Load Medication Syringe



1. With syringe gradations facing up, push the syringe against the syringe locator.
2. Seat the syringe flange into the syringe locator.
3. Verify that the Precision tubing (with the luer disc) is connected to syringe. Seat the luer disc inside the syringe driver nose so that the syringe is firmly attached inside the syringe driver.

**NOTE:** You should not need to use significant force to load or remove the syringe. If you are having trouble, stop and make sure the black tab is at the end of its track.

## 11 Close Syringe Driver



Check that all clamps are open. To start the infusion, close the top lid. The infusion will begin immediately. Periodically monitor the infusion by checking the progress window, until the syringe is empty.

**To pause infusion:** Simply open the syringe driver. To continue, re-close the top lid.

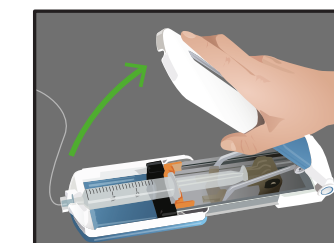
**NOTE:** When closing the syringe driver, make sure that the top lid is fully extended and aligns with the bottom portion.

**If using multiple syringes:** Once the first syringe is empty, open the syringe driver to turn off. Remove the syringe and connect additional syringe to the luer disc end of the Precision tubing set. Close the syringe driver to continue infusion.

## End of Infusion:

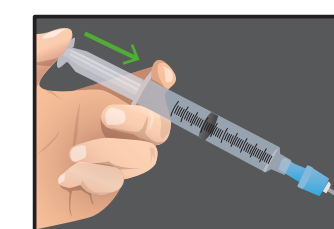
When syringe is completely empty.

### 12 Open Syringe Driver



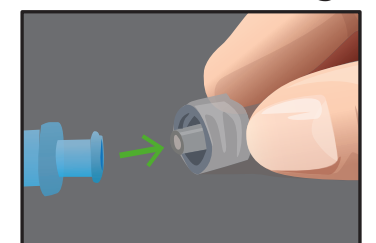
If needed, close the clamp on the catheter. Turn the syringe driver OFF by opening the top lid.

### 14 Flush



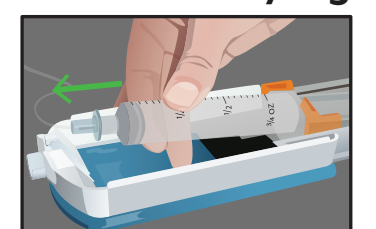
Refer to **Step 7** for the SASH technique and follow your healthcare provider's instructions.

### 13 Detach Tubing



Disconnect Precision tubing set from catheter or needle-free connector.

### 15 Remove Syringe



Remove the empty syringe.

KORU is a Proud Sponsor of the Immune Deficiency Foundation and GBS/CIDP Foundation International

The FREEDOM60® and FreedomEdge® Syringe Infusion Systems and Precision Flow Rate Tubing™ are trademarks of KORU Medical Systems and are compliant with Medical Device Directive 93/42/EEC. KORU Medical Systems is ISO 13485 certified. ©2020 KORU Medical Systems. All Rights Reserved. Freedom\_ABXInfusionMat\_03-1111vF

facebook.com/korumedical  
instagram.com/korumedical  
twitter.com/korumedical  
bit.ly/koruids  
Connections Blog:  
korumedical.tumblr.com

**KORU**  
MEDICAL SYSTEMS

845-469-2042 | korumedical.com