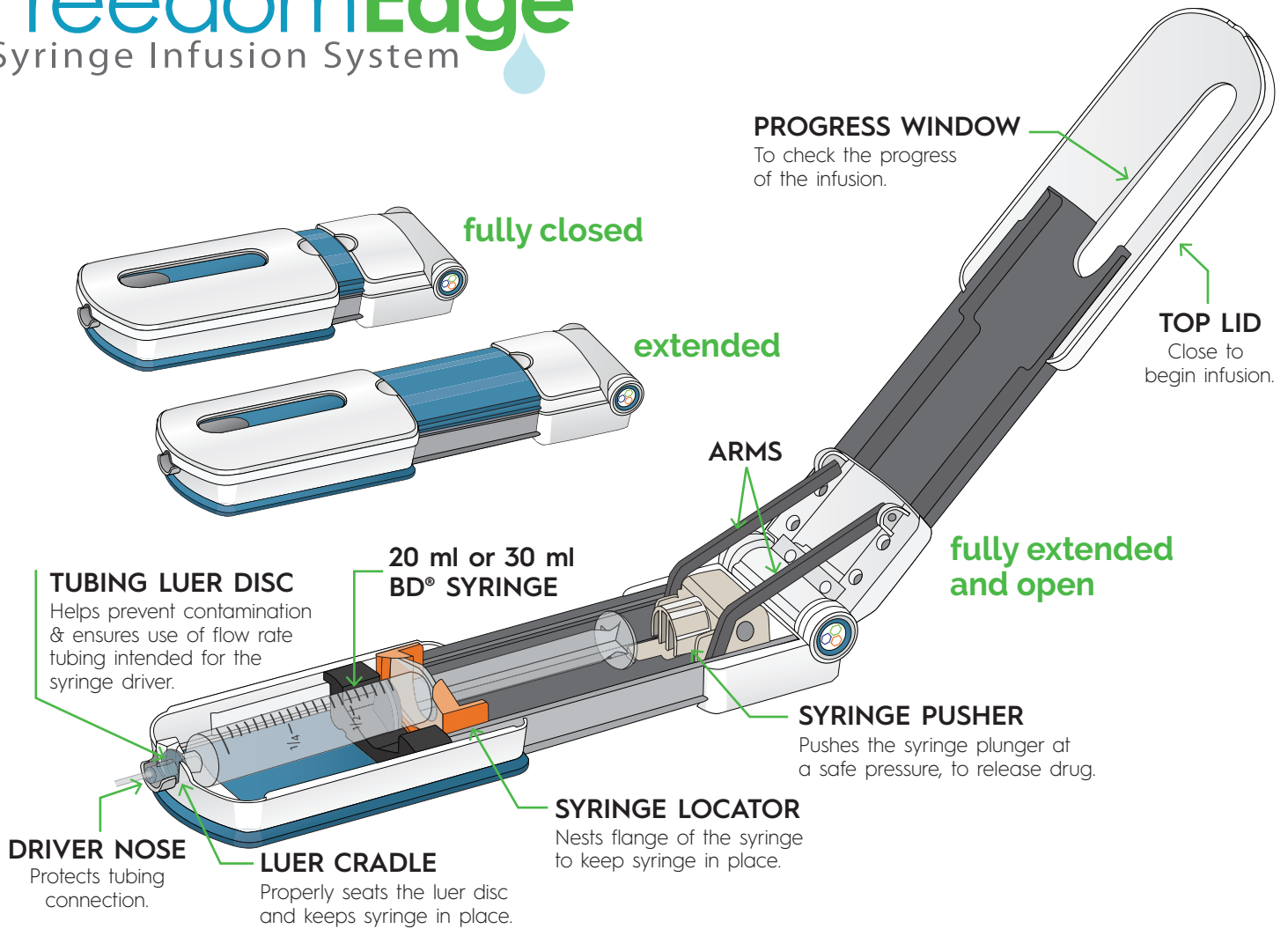


# FreedomEdge<sup>®</sup>

Syringe Infusion System

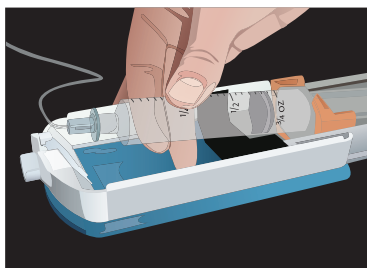


## Indications For Use:

The FreedomEdge<sup>®</sup> Syringe Infusion System is indicated for the infusion of prescribed liquid medicines.

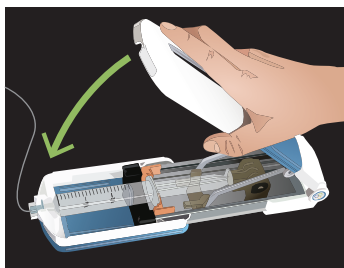
## Infusions made easy as 1, 2, 3...

### 1 Load



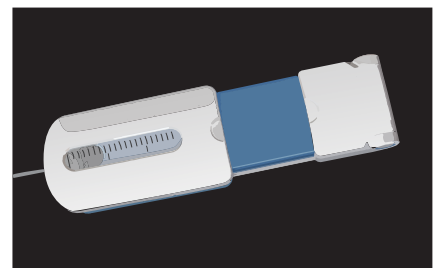
Load prepared 20 or 30 ml syringe.

### 2 Close



Close top lid to start the infusion.

### 3 Go



Check infusion using progress window.

# FreedomEdge<sup>®</sup>

Syringe Infusion System

## Easy to Use:

- No controls
- Just 3 steps – load, close and go
- Completely portable:
  - No batteries or electric needed
  - Travel pouch included for easy transport
- No alarms or product maintenance
  - Silent operation – convenient for patients
- Ideal for ALL users – small hands, limited dexterity/strength

## Integrated Safety:

- Maintains safe, constant pressure
- Only KORU Freedom systems have DynEQ™ (Dynamic Equilibrium), which:
  - Automatically responds to increasing pressure (caused by tissue saturation) by slowing the flow rate during delivery
- Holds full pressure after infusion is complete to prevent blood return or drug backflow
- Eliminates:
  - Concerns of a bolus
  - Overflow
  - Overdose or runaway infusion

## Quality Design:

- Made in the USA with highest level of quality control for defect-free product
- No sensitive electric parts
- Reliable system, consistent infusions

## Versatile:

- Can be used for various administrations
- Precision tubing sets from F0.5 - F2400

## Ordering Information

### Product Description:

FreedomEdge<sup>®</sup> Syringe Driver with Travel Pouch

Replacement Travel Pouch - blue

### Item #:

F10020

347400



## Technical Specs

### Syringe Driver:

Weight: 12 oz (0.34 kg)  
Length: Closed: 9" (229 mm)  
Extended: 11.75" (299 mm)  
Width: 3.25" (83 mm)  
Height: 1.5" (38 mm)

### System:

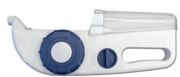
Accuracy: +/- 15%  
Residual volume: <0.4 ml

### Syringe:

Reservoir volume: 20 ml/30 ml (max)  
(20 ml or 30 ml BD<sup>®</sup> syringes)



## Other Products:



**FREEDOM60<sup>®</sup> Syringe Infusion System**  
for larger infusion doses, BD<sup>®</sup> 50 ml syringe



**Precision Flow Rate Tubing™**  
for flow rates from F0.5 - F2400



**HiGH-Flo Subcutaneous Safety Needle Sets™**  
available in 24G and 26G, 4 mm-14 mm lengths  
and 1-6 needle leg sets



**24" Extension Tubing Set (FEXT)**  
for those who need a longer length