



# WalkMed®

## Product Catalog



WalkMed, LLC

14190 E. Jewell Ave Unit 10, Aurora, CO 80012

PN204690K

[walkmed.net](http://walkmed.net)

Order Toll Free: 800.578.0555





# Table of Contents

## WalkMed Infusion Pumps

WM 350VL .....	1
----------------	---

## Ambulatory Bags and IV Administration Sets

65 mL Reservoir Bag .....	2
150 mL Reservoir Bag .....	2
250 mL Reservoir Bag .....	2
40" Set .....	3
60" Set .....	3
40" Set with 0.22 Micron Filter and Check Valve .....	3
66" Set with 0.22 Micron Filter .....	3

## WalkMed Accessories

Tamper Resistant Keypad Covers .....	5
Tamper Resistant Reservoir Covers .....	5
Standard Covers .....	5
Disposable Carry Pouch .....	6
Large Carry Pouch .....	6
Adjustable Belt .....	6
Ambulatory Pump Carrying Cases & Back Pack .....	6
Literature .....	7



# WalkMed 350VL Ambulatory Infusion Pump

## WalkMed 350VL



### Safety & Convenience

- ◆ Keypad Lock Out for Patient Protection
- ◆ Programmable Total Volume Limit & Delivery Tracking
- ◆ Auto-Occlusion Alarm Release for Sensing & Silencing Alarm

### Continuous Infusions

### Specifications:

### Operational Highlights

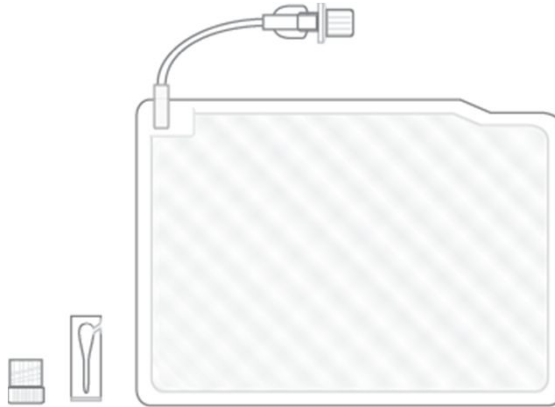
- ◆ Easy 4-step Programming
- ◆ 0.10 – 30.0 mL/hr Delivery Rates
- ◆ Compact & Durable, with 20 + years of Proven Dependability

Dimensions	4.4 x 4.0 x 1.5 in (includes front cover)
Weight	12 oz (includes battery and front cover)
Accuracy	+/- 5%
Infusion Mode	Continuous
Flow Rate	0.10 – 19.99 mL/hr (0.01 mL resolution) 20.0 – 30.0 mL/hr (0.10 mL resolution)
Total Volume Limit	1 – 1,999 mL
Reservoir Volume	65, 150, 250 mL bags (spike sets available)
Power	9 volt battery (standard)
Typical Battery Capacity	450 mL @ 1 mL/hr - 18.7 Days 650 mL @ 10 mL/hr - 2.7 Days 500 mL @ 30 mL/hr - 0.7 Days
Alarms/Alerts	System Idle, Downstream Occlusion, Low Battery Depleted Battery, Under-Delivery, Over-Delivery, Not Delivering, Data Entry Error, Clamp Bar Open, System Malfunction, End of Infusion Notice, KVO/TVL Reached



# WalkMed Ambulatory Bags and IV Admin Sets

**Catalog # IPR-86**  
65 mL Reservoir Bag



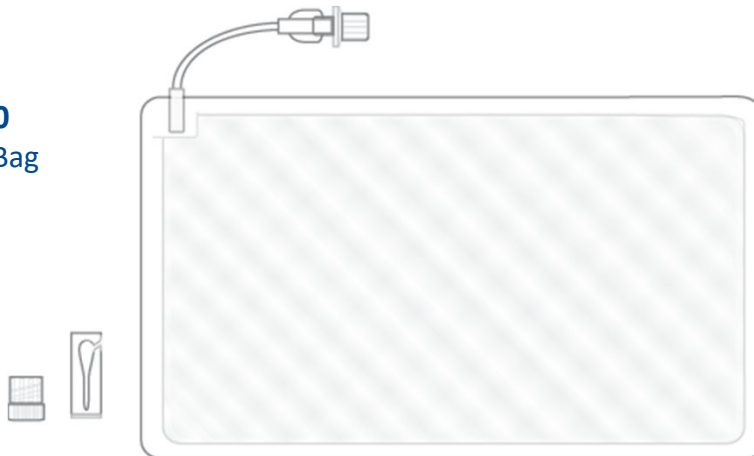
**Part number: 204820**

**Catalog # IPR-150**  
150 mL Reservoir Bag



**Part number: 204821**

**Catalog # IPR-250**  
250 mL Reservoir Bag



**Part number: 204822**

WalkMed Reservoir Bags are not made with natural rubber latex, contain less than 0.1% DEHP, & are sold 10 per case.



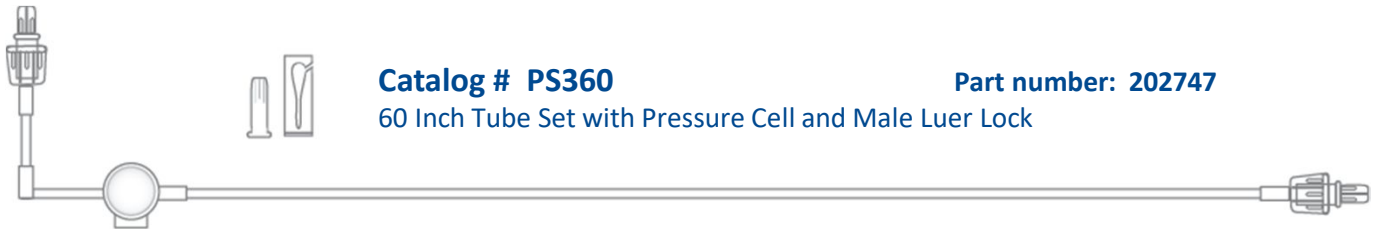
# WalkMed Ambulatory Bags and Tube-Sets



**Catalog # PS400/300**

**Part number: 202659**

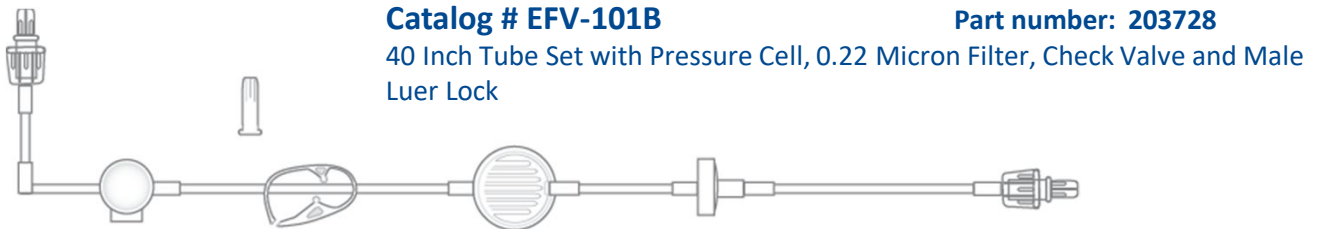
40 Inch Tube Set with Pressure Cell and Male Luer Lock



**Catalog # PS360**

**Part number: 202747**

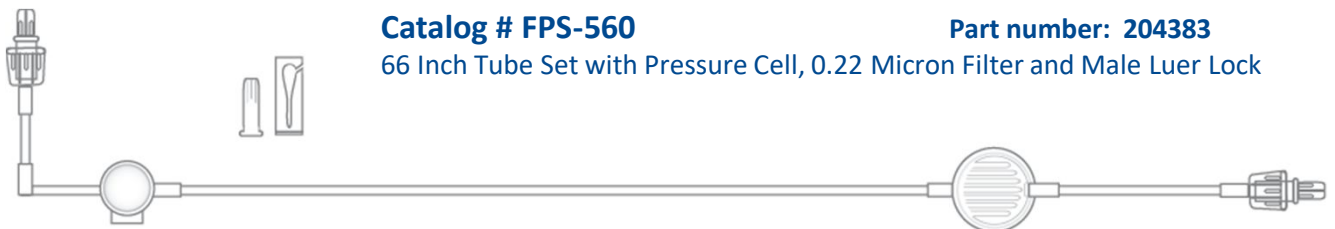
60 Inch Tube Set with Pressure Cell and Male Luer Lock



**Catalog # EFV-101B**

**Part number: 203728**

40 Inch Tube Set with Pressure Cell, 0.22 Micron Filter, Check Valve and Male Luer Lock



**Catalog # FPS-560**

**Part number: 204383**

66 Inch Tube Set with Pressure Cell, 0.22 Micron Filter and Male Luer Lock

WalkMed Ambulatory Tube Sets are not made with natural rubber latex, contain less than 0.1% DEHP, & are sold 10 per case.

## WalkMed Accessories and Literature



# WalkMed Keypad & Reservoir Covers

## Tamper Resistant Keypad Covers

**Catalog # 204813**  
5-Key Access

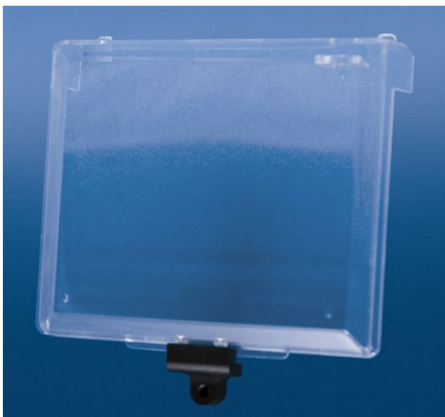


**Catalog # 204839**  
All-Key Access



## Tamper Resistant Reservoir Covers

**Catalog # 204818**  
Small Cover



**Catalog # 204819**  
Large Cover



**Catalog # 204845** Tamper Resistant Torque Wrench Key

**Catalog # 103192** Standard Keypad Cover

**Catalog # 102795** Standard Small Reservoir Cover

**Catalog # 204711** Standard Large Reservoir Cover





# Ambulatory Pump Carrying Cases & Pouches

## Disposable Carry Pouch



### Catalog # 204625 – 10/case

Intended for single use, non-padded. Suitable for use with both Small and Large Reservoir Covers. Includes waist belts.

## 500 mL Disposable Carrying Case



### Catalog # 204809

Intended for single use, non-padded. Fits up to one 1L IV bag and one WM pump; for use with larger volume deliveries. Includes shoulder strap.

## Large Carry Pouch



### Catalog # 204618

Intended for multiple use, padded. Suitable for use with both Small and Large Reservoir Covers. Includes shoulder strap.

## 1 Liter Carrying Case



### Catalog # TM-C06

Intended for multiple use. Fits up to one 1L IV bag, one WM Reservoir Bag and two WM pumps; for use with larger volume deliveries. Includes shoulder strap and waist belt.

## Adjustable Belt



### Catalog # 204647

Suitable for use with the Large Carrying Pouch and Disposable Carrying Pouch.

## Back Pack



### Catalog # TM-SAB3

Intended for multiple use and large volume infusions where multiple pumps and 3L IV bags are used with a spike extension set.



# WalkMed Manuals & Literature



**Catalog # 204878** WalkMed 350VL Operation Manual

**Catalog # 204637** WalkMed 350VL Clinician Quick Start Guide

**Catalog # 204638** WalkMed 350VL Patient Quick Reference Card

Notes:

WalkMed, LLC

14190 E. Jewell Ave Unit 10, Aurora, CO 80012

PN204690K

**walkmed.net**

Order Toll Free: 800.578.0555